

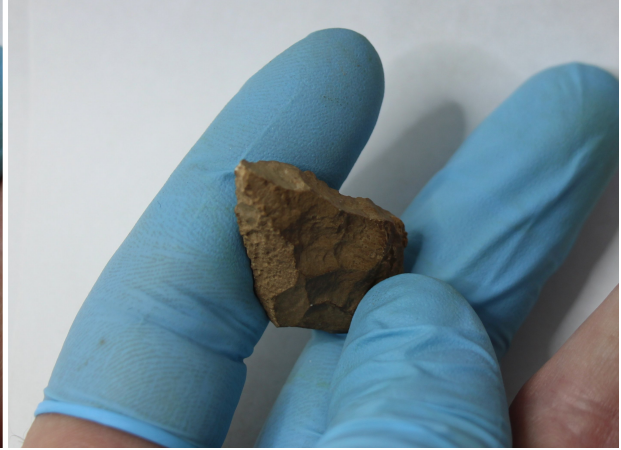
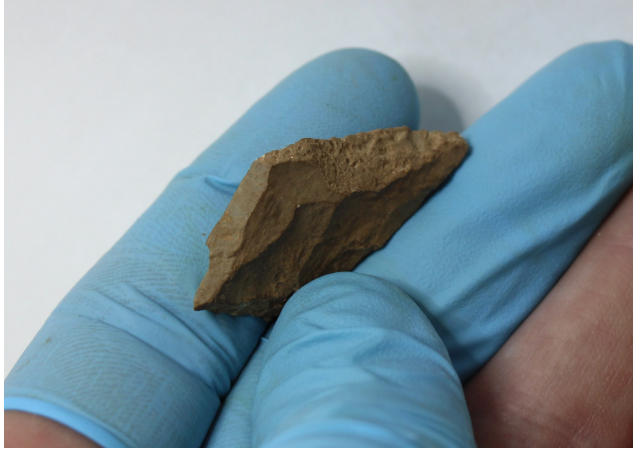
I.14. Taxa HL, HM: Points on plaquette & point-like effigies
 (10 items; #604–613)

#604. Item no. 1159-13654

Exc. nr.	Discovery date	Square-subsq.	Depth range Z(D)	Depth Z(datum)	UTM E (x)	UTM N (y)	Stratum	Stratig. comp. (SC)
X12	13/01/2017	R5-SE	-	-1.98	283929.80	2724533.68	1203?	B
Taxon code	Taxon definition	Length (mm)	Width (mm)	Thickness (mm)	Weight (g)	Raw material class		
HL?	Point on plaquette?	35.8	20.8	7	4.26	V?		



Characterization. This artefact is a diamond-shaped point or preform made on a limestone



plaquette (meaning lamina: a relatively thin slab-like or tabular natural blank), coming from the partially bioturbated area in the easternmost sector of the excavation, near the eastern wall, so its attribution to the upper 1203 stratum could be questioned and non-definitive. Yet, the characteristic brown patina that covers the entire piece shows that it was deposited for a long time in the organic-rich sector. It comes from the proximity of the moon-shaped point included in the previous taxonomic category. Minuscule recent damages on the basal



section confirm that the raw material is the familiar green limestone variety. The damage on one face of the point suggests fire or chemical stress, later covered by the brown patina. The point is symmetrical in dorso-ventral and lateral directions, but asymmetrical in anteroposterior sense. The edges are rather squarish, and there are preserved texturized sections of cortex on them. Nevertheless, the point has a particularly pointy distal, and a sharp convergent base.

#605. Item no. 907-13735

Exc. nr.	Discovery date	Square-subsq.	Depth range Z(D)	Depth Z(datum)	UTM E (x)	UTM N (y)	Stratum	Stratig. comp. (SC)
X12	08/01/2017	N4-NW	-1.50/ -1.60	-1.55	283925.91	2724533.52	1204	B
Taxon code	Taxon definition	Length (mm)	Width (mm)	Thickness (mm)	Weight (g)	Raw material class		
HL	Point on plaquette	31	21.1	3.8	3.5	B		



Characterization. The nature of the blank of this thin symmetrical point (or point effigy) is uncertain: whether a tabular transversal flake or a plaquette (or lamina). Considering the lack of assuring features, the blank is considered a plaquette or lamina, of a grey-blueish limestone variety. The surfaces are flat, without the curvature characteristic to usual flakes. Even so, one face is more texturized than the other. One of the edges, in the distal portion of the point, is a natural square plane. The converging edge was shaped by successive blows, all coming from the non-texturized side. It is on this side that a shallow transversal flake extraction covers the right proximal corner. This extraction originates on a white-dotted corner platform. On the other side, a similar attempt, originating on the other corner, resulted in a less extended flake removal. The rounded base of the point was shaped by several direct percussion removals. The piece displays notable dorsal-ventral and lateral symmetry.

#606. Item no. 1046-13359

Exc. nr.	Discovery date	Square-subsq.	Depth range Z(D)	Depth Z(datum)	UTM E (x)	UTM N (y)	Stratum	Stratig. comp. (SC)
X12	11/01/2017	N4-NE	-1.60/-1.70	-1.62	283926.31	2724533.52	1204	B
Taxon code	Taxon definition	Length (mm)	Width (mm)	Thickness (mm)	Weight (g)	Raw material class		
HL	Point on plaquette	27.9	13.7	7.6	2.98	V		



Characterization. This artefact is a point on plaquette, a functional or an effigy-like projectile point or perforator, shaped by edge-fracturing on a thin lamina of pale-green limestone. It is difficult to tell whether the blank was a tabular transversal flake or a small natural tablet, which is most probably. The proximal (basal) section of the point is thick. The distal tip is very pointy.



#607. Item no. 1046-13740

Exc. nr.	Discovery date	Square -subsq.	Depth range Z(D)	Depth Z(datum)	UTM E (x)	UTM N (y)	Stratum	Stratig. comp. (SC)
X12	11/01/2017	N4-NE	-1.60/ -1.70	-1.62	283926.11	2724532.12	1204	B
Taxon code	Taxon definition	Length (mm)	Width (mm)	Thickness (mm)	Weight (g)	Raw material class		
HM	Point-like shape on plaquette	47.1	20.5	5.1	6.21	V		





Characterization. This object has a questionable, yet defendable, anthropic origin, and it is classified as a point-like shape or a point-like effigy made by simple edge fracturing on a thin, green limestone plaquette or lamina. The controlled snapping/fracturing of edges is a technique widespread in the Chiquihuite assemblage. The item has a polygonal symmetric shape, with one half naturally formed, and the other half created by the fracture of two edges of the plaquette. It is possible that the blank is a flat transversal flake, with the possible white-dotted impact set on the platform of the flake, visible on the angle formed between one fractured edge and one natural edge. Even if this piece looks like the result of natural hazard, it is highly probable it was intentionally created by edge fracturing.

#608. Item no. 1437-13746

Exc. nr.	Discovery date	Square-subsq.	Depth range Z(D)	Depth Z(datum)	UTM E (x)	UTM N (y)	Stratum	Stratig. comp. (SC)
X12	16/01/2017	O4-SW	-1.80/ -1.90	-1.85	283926.96	2724532.65	1204	B
Taxon code	Taxon definition	Length (mm)	Width (mm)	Thickness (mm)	Weight (g)	Raw material class		
HL	Point on plaquette	31.8	9.5	4.3	1.5	Ca		



1 cm



Characterization. This piece is a long and narrow projectile point, made by the crude edge modification of a white calcite lamina. Although limited to the very margins of the blank, the flaking can be considered bifacial, as the scars were produced multidirectionally. The cross-section is square, tabular. The shape is relatively symmetrical, in lateral and dorso-ventral directions.

#609. Item no. 406-9792

Exc. nr.	Discovery date	Square-subsq.	Depth range Z(D)	Depth Z(datum)	UTM E (x)	UTM N (y)	Stratum	Stratig. comp. (SC)
X12	30/01/2016	i4-W	-0.98/ -1.12	-1.05	283920.66	2724532.87	1206	B
Taxon code	Taxon definition	Length (mm)	Width (mm)	Thickness (mm)	Weight (g)	Raw material class		
HL	Point on plaquette	46.2	19.9	5.9	5.79	Ca		



Characterization. This is a remarkable tear-drop-shaped point, made on a calcite plaquette or lamina. The artefact displays a good lateral symmetry, but, as is the case with other Chiquihuite points-on-plaquette, the surfaces do not present invasive flaking. The shaping of the object is achieved not by flaking, but exclusively by the trimming and precision fracturing (by abrupt percussion) of the edges of the flat and thin blank. This particular item is coated in patina, and the surfaces are texturized and uneven. It is difficult to assert whether the points-on-plaquette,

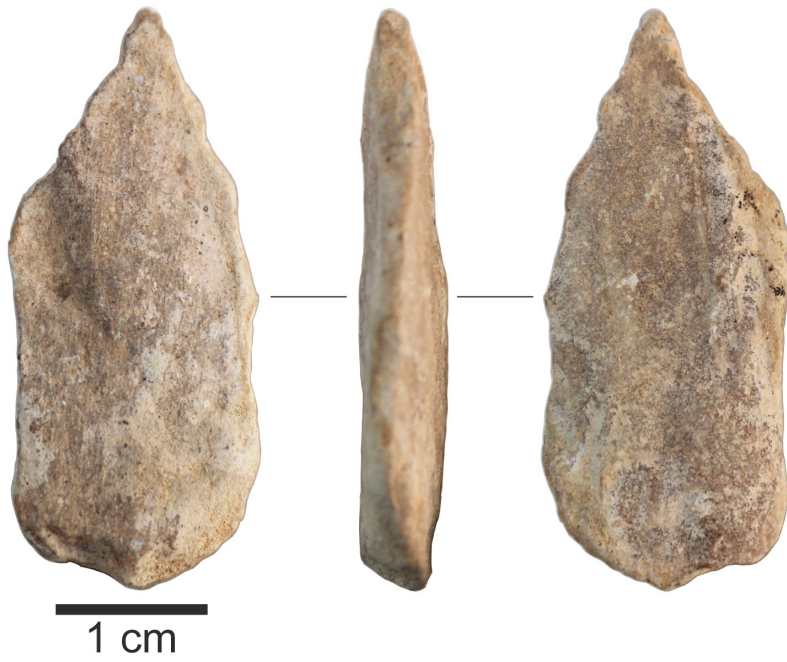


such this one, are actual functional points or only votive or symbolic objects. However, in some cases - like the present one - the morphology of the specimen would allow the artefact to function as a hafted dart point reasonably well.

#610. Item no. 1596-13750

Exc. nr.	Discovery date	Square-subsq.	Depth range Z(D)	Depth Z(datum)	UTM E (x)	UTM N (y)	Stratum	Stratig. comp. (SC)
X12	19/01/2017	M5-NE	-2.00/-2.10	-2.03	283925.19	2724534.08	1206	B
Taxon code	Taxon definition	Length (mm)	Width (mm)	Thickness (mm)	Weight (g)	Raw material class		

HL	Point on plaquette	38.4	16.4	5.5	4.57	NI		
----	-----------------------	------	------	-----	------	----	--	--



Characterization. This elongated, crudely made point was manufactured by the marginal modification of what appears to have been a limestone or calcite lamina or plaquette, entirely covered by fine yellowish patina that impedes a proper appreciation of the raw material. The carbonaceous depositions cover also the fracture areas. One edge is square and shows the commencement of “square-edge-management” flaking. The other edge is thinner, seemingly shaped by abrupt percussion retouch or edge trimming. Same simple technique was used to give shape to the distal tip of the piece and to its slightly angular base.



#611. Item no. 1474-13747



Exc. nr.	Discovery date	Square -subsq.	Depth range Z(D)	Depth Z(datum)	UTM E (x)	UTM N (y)	Stratum	Stratig. comp. (SC)
X12	17/01/2017	M6-SE	-1.90/ -2.00	-1.95	283925.14	2724534.78	1206	B
Taxon code	Taxon definition	Length (mm)	Width (mm)	Thickness (mm)	Weight (g)	Raw material class		
HL	Point on plaquette	36.1	19.8	6.3	5.28	V		

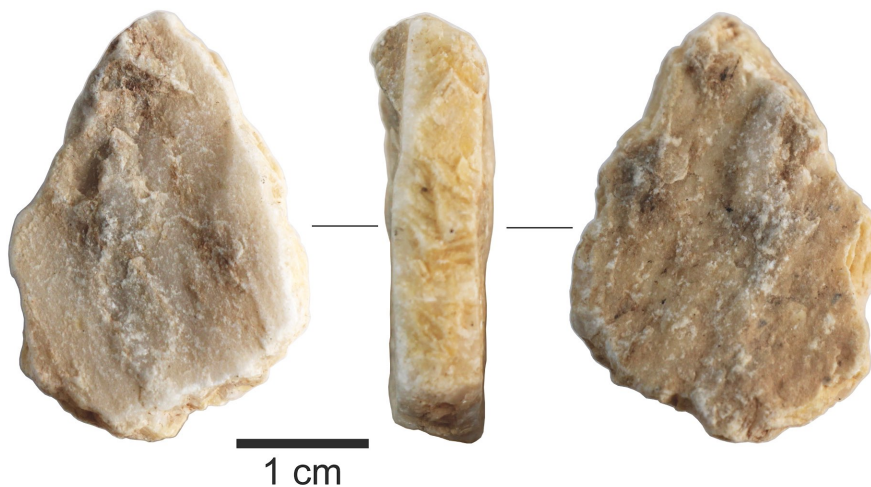


Characterization. This artefact is, without any doubt, one of the best — and strangest — typological and technological examples in the Chiquihuite assemblage. This is a projectile point or a point-like effigy, made by edge management and unifacial flaking on a thin, green limestone plaquette. It has an almost triangular shape, with a pointy distal end and an angular, convergent base. There is no doubt about the artificiality of this object, supported by a plurality of self-evident human interventions. One side is flat, with a natural micro-topography and natural damage, apart from small, shallow micro-flakes that were formed in the corners of the proximal area as colateral products of the thinning flaking visible on the other face that we can define as dorsal. Looking at this dorsal side of the tool, it is difficult to say whether the flat right edge is a natural square edge or part of an anthropic extraction. This edge was used as a platform for a small flake extraction visible in the central-right area. Moving along this right edge towards the basal area, one can appreciate a thinning flake on the corner, with a white-dotted platform area clearly noticeable. The impact produced a wide narrow colateral extraction on the opposite face of the blank, as already mentioned above. On the basal edge, another flake achieved the thinning of the base and its shaping as angular or convergent. It is of interest to note that the platform area of this basal extraction received flaking oriented towards the opposite face, more like pressure-and-grinding, producing small scars on the other side, and achieving a symmetry for the corners of the point. The left edge bears the indicators of an anthropic shaping. The area was shaped by an abrupt percussion blow, perpendicular to the surface of the plaquette; its white-dotted impact point is still visible from

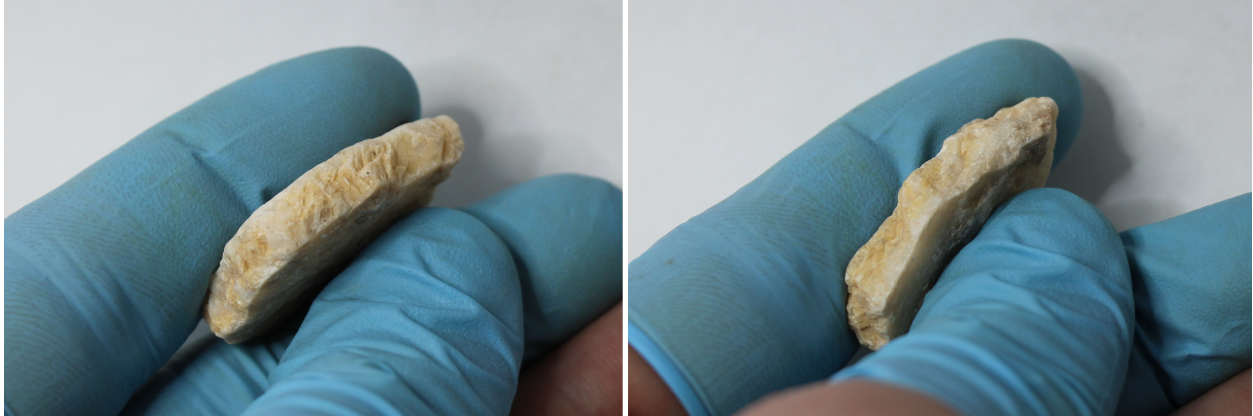
the upper plane of the tool. This percussion removed a short and wide transversal flake, producing the edge of the point symmetrical to the other edge. Despite its simplicity, this is a remarkable example of the reasoning behind the lithic technology at the site.

#612. Item no. 1481-13760

Exc. nr.	Discovery date	Square-subsq.	Depth range Z(D)	Depth Z(datum)	UTM E (x)	UTM N (y)	Stratum	Stratig. comp. (SC)
X12	16/01/2017	M6-NE	-1.90/-2.00	-1.97	283925.19	2724535.17	1206	B
Taxon code	Taxon definition	Length (mm)	Width (mm)	Thickness (mm)	Weight (g)	Raw material class		
HM	Point-like shape or point effigy	32.6	22.3	7.7	7.29	Ca		

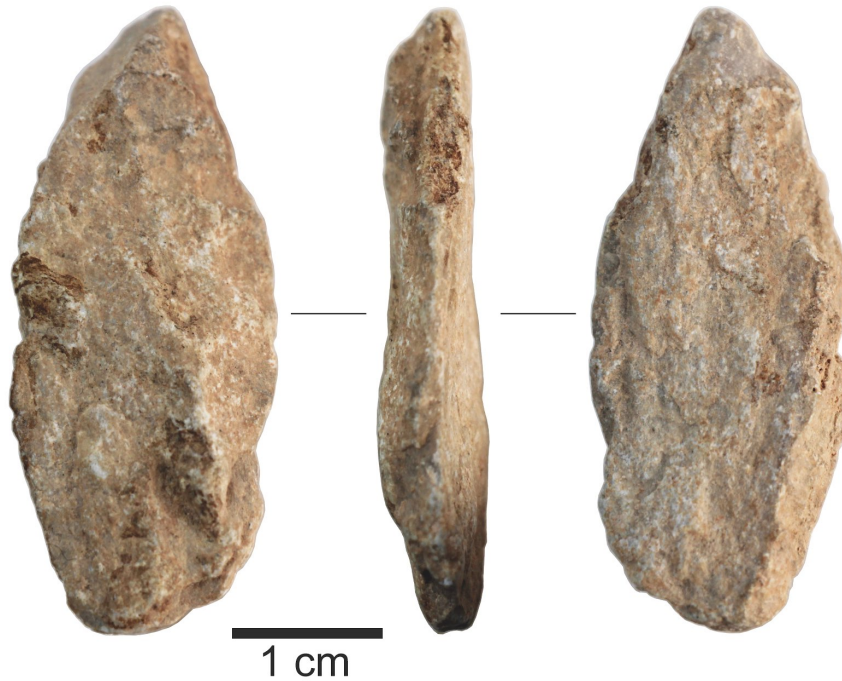


Characterization. This is a very interesting and intriguing artefact: a point-like shape or a point effigy made by the edge-fracturing of a calcite lamina. The artefact has a cordiform shape with convex edges, managing to imitate relatively well the shape of a projectile point, although the



result would never be functional, but probably symbolical or with votive significance, yet recognizable as a point shape when first seen. The shape was obtained by a continuous chain of contiguous small fracture plains achieved, probably, by indirect percussion. This means the manufacturer had to employ a sort of intermediary punching instrument, like a chisel that transferred the perpendicular percussion from the hammer to the calcite lamina. Nevertheless, this technological assumption is still distant from receiving definitive support.

#613. Item no. 1663-13752



Exc. nr.	Discovery date	Square-subsq.	Depth range Z(D)	Depth Z(datum)	UTM E (x)	UTM N (y)	Stratum	Stratig. comp. (SC)
X12	20/01/2017	N4-NW	-2.10/ -2.20	-2.11	283925.51	2724533.52	1206	B

Taxon code	Taxon definition	Length (mm)	Width (mm)	Thickness (mm)	Weight (g)	Raw material class		
HL	Point on plaquette?	41.6	17.4	6.3	5.43	V		



Characterization. This item has a doubtful anthropic origin, yet it qualifies as one of the naturally-shaped objects adapted to human use by minimal intervention. In this case, a green limestone lamina was shaped to obtain a distal tip for a point. The surface became weathered during its permanence inside the stratum.

