

**II.2. Taxon C: Incipient reduction of blanks**  
( 3 items; #638–640)

**#638. Item no. 2482-16315**

Exc. nr.	Discovery date	Square-subsq.	Depth range Z(D)	Depth Z(datum)	UTM E (x)	UTM N (y)	Stratum	Stratig. comp. (SC)
X16	13/01/2019	A6-NE	-	5.74	283905.20	2724528.17	1604A	B
Taxon code	Taxon definition	Length (mm)	Width (mm)	Thickness (mm)	Weight (g)	Raw material class		
C	Incipient reduction?	29.1	21.1	8.1	5.53	V		



Characterization. This item is, probably, the incipient reduction of a transversal flake that went wrong and was abandoned. The flat, oval platform is still preserved, prominent on the proximal

section. The thick sediment concretions cemented on the surface of the piece make the observation of the flaking scars difficult. The anthropic origin of this item is questionable.

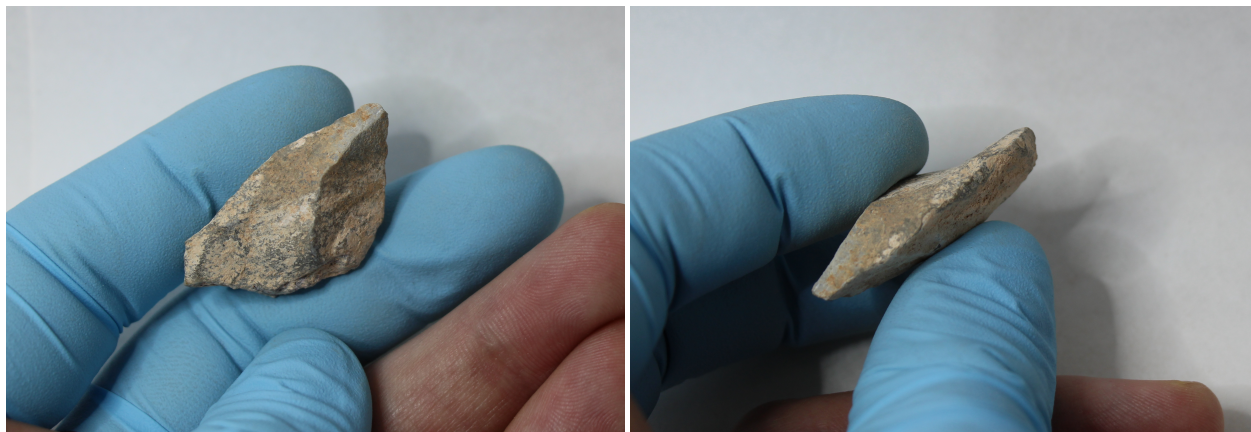


**#639. Item no. 3469-16343**

Exc. nr.	Discovery date	Square-subsq.	Depth range Z(D)	Depth Z(datum)	UTM E (x)	UTM N (y)	Stratum	Stratig. comp. (SC)
X16	28/01/2019	A6-NW	-	5.69	283904.76	2724528.41	1605	B
Taxon code	Taxon definition	Length (mm)	Width (mm)	Thickness (mm)	Weight (g)	Raw material class		
C	Incipient reduction	33.7	19.4	10.3	5.66	V		



**Characterization.** This artefact is a green limestone flake, apparently a transversal flake, that presents incipient bifacial reduction, probably with the purpose to obtain a point. The thick depositions of carbonate sediment make the analysis of the morphology difficult. The platform is no longer available for study. Two flakes were extracted from opposite faces of the flake, using its platform to land the impacts.



**#640. Item no. 3566-16350**

Exc. nr.	Discovery date	Square-subsq.	Depth range Z(D)	Depth Z(datum)	UTM E (x)	UTM N (y)	Stratum	Stratig. comp. (SC)
X16	28/01/2019	C2-SE	-	6.00	283907.36	2724523.60	1607/ 1608A	B
Taxon code	Taxon definition	Length (mm)	Width (mm)	Thickness (mm)	Weight (g)	Raw material class		
C	Incipient reduction	26.4	28	10.1	7.71	V		



Characterization. This artefact is the proximal fragment of a secondary flake of green limestone that was modified on one face by multidirectional flake extractions, probably in an attempt of reduction aimed at producing a thinned artefact. It could be interpreted as a discarded preform. Originally, this was a thick flake, with a robust dihedral platform, now partly broken. The distal section of the flake is missing, removed by a transversal fracture. No use-wear is visible on the edges. The surface of the item reveals indicators of possible thermal damage, suggested by the characteristic orifices that normally occur on cherts and limestones in sustained contact with fire.

