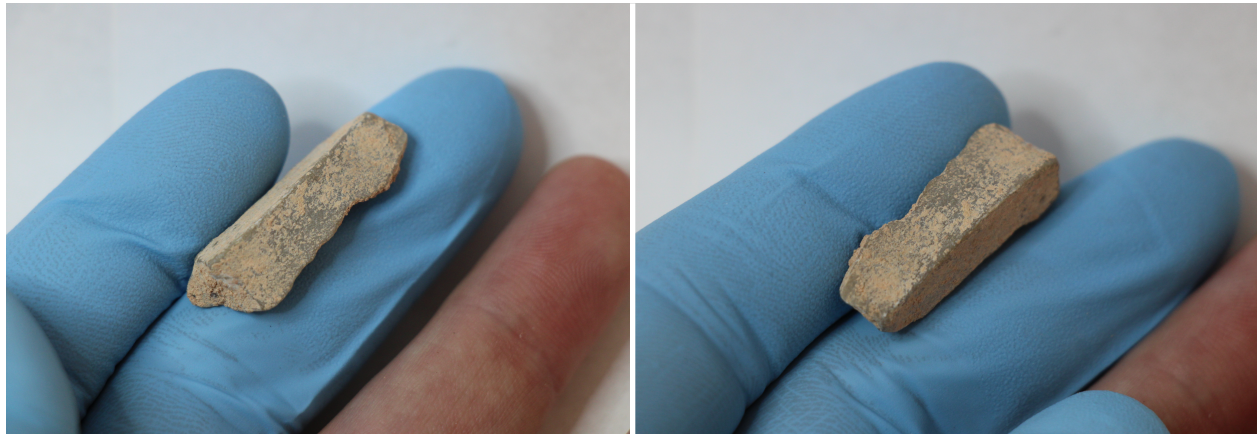


#837. Item no. 3972-17124

Exc. nr.	Discovery date	Square-subsq.	Depth range Z(D)	Depth Z(datum)	UTM E (x)	UTM N (y)	Stratum	Stratig. comp. (SC)
X16	05/02/2019	B5-SW	-	5.75	283905.95	2724526.93	1604A/ 1606	B
Taxon code	Taxon definition	Length (mm)	Width (mm)	Thickness (mm)	Weight (g)	Raw material class		
E	Blade	29.5	10.8	7.2	2.68	V		



Characterization. This artefact is a secondary, prismatic, thick blade, a debitage element extracted from the corner of a tabular core of fine-grained green limestone. The platform is missing, as the proximal section is broken by a bending fracture visible at the wider end of the piece. A previous blade had been extracted from the same parent core, and from the same direction, with its extraction scar visible as the left dorsal side of the blade. The right dorsal

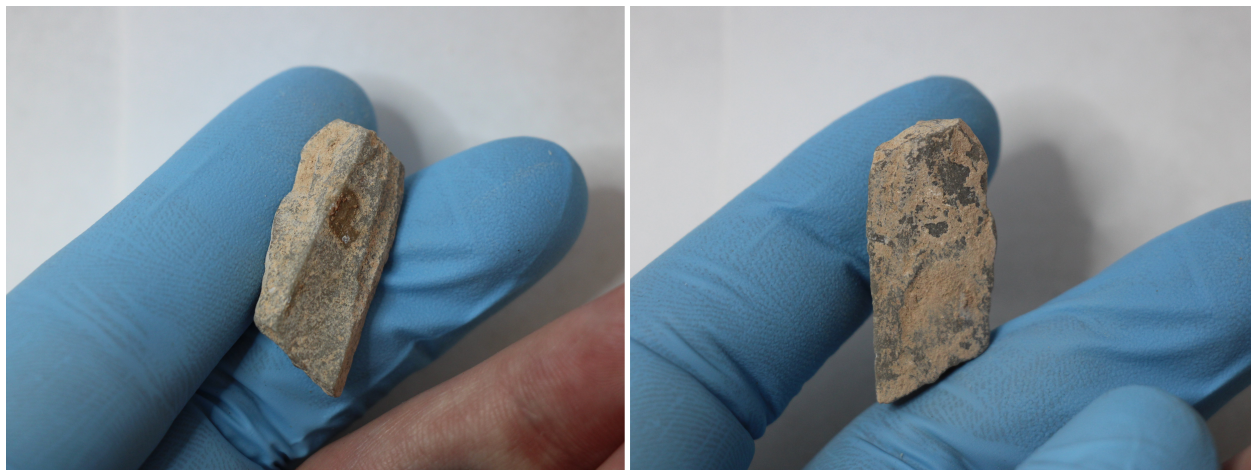
area is cortical and flat. The entire dorsal side is affected by fine-grained, uniform depositions of sediment, with more localized accumulations over the ventral distal area. A protuberance in that section suggests an impact bulb formed during a bipolar extraction, in which the distal surface of the core rests upon an anvil-like support. The left edge apparently reveals certain evidence of use-wear or tool functionality, but the features are difficult to assess, because of the sediment coating.

#838. Item no. 4105-17132

Exc. nr.	Discovery date	Square-subsq.	Depth range Z(D)	Depth Z(datum)	UTM E (x)	UTM N (y)	Stratum	Stratig. comp. (SC)
X16	09/02/2019	B5-NE	5.65/5.60	5.62	283906.22	2724527.29	1604A/1606	B
Taxon code	Taxon definition	Length (mm)	Width (mm)	Thickness (mm)	Weight (g)	Raw material class		
E	Blade	28	13.6	5.4	2.73	V		



Characterization. This artefact is a tertiary, prismatic blade of green limestone, with scarce coating of fine-grained sediment occupying its both faces. The prismatic dorsal surface contains the extraction scars of at least two previous blades, while the third plane, almost vertical, is rather a part of the flat natural surface of the tabular parent core. It has an eroded, minimally faceted platform, that is wide, triangular, tilted to the right, with an obliterated *erailure* scar on the ventral face, next to a shallow impact protuberance on the ventral edge of the platform. The distal end is missing, broken by a diagonal fracture. The edges are mostly intact, with no clear evidence of use-wear, despite the presence of micro-scars.



#839. Item no. 3217-17078

Exc. nr.	Discovery date	Square-subsq.	Depth range Z(D)	Depth Z(datum)	UTM E (x)	UTM N (y)	Stratum	Stratig. comp. (SC)
X16	22/01/2019	A6-NW	-	5.73	283904.84	2724528.41	1605	B
Taxon code	Taxon definition	Length (mm)	Width (mm)	Thickness (mm)	Weight (g)	Raw material class		
E	Blade	16	8.4	3.2	0.54	V		



1 cm

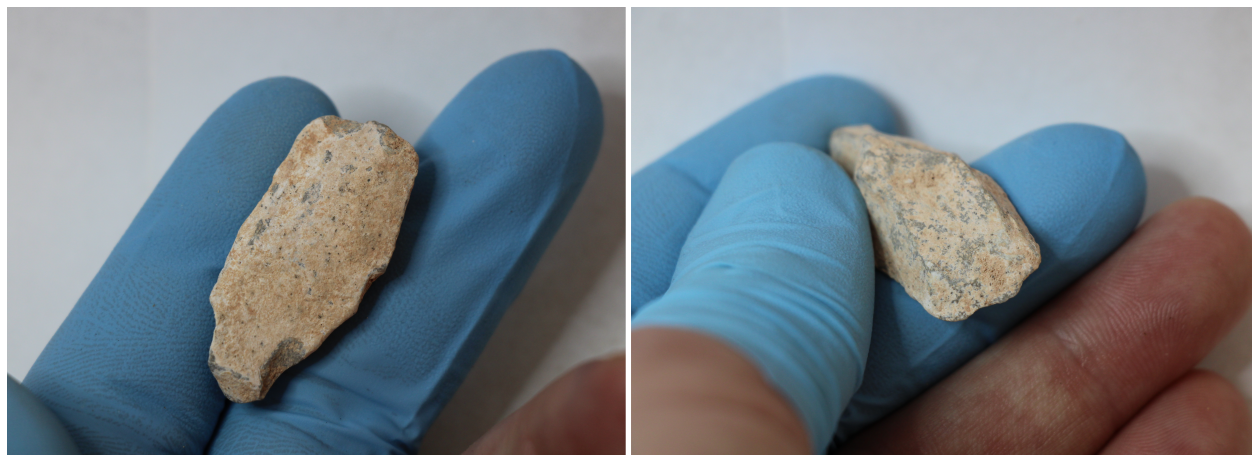
Characterization. This small item is the proximal fragment of a flat-backed tertiary or secondary micro-blade of green limestone. The distal end is missing, removed by a bending fracture. The sediment depositions affect mainly the dorsal side. The entire proximal end is the platform, flat, wide, unprepared, without visible *erraillure* scar



or impact bulb associated on the ventral side. This is a thinning debitage element, without indications of tool functionality or use-wear on the edges.

#840. Item no. 3312-17088

Exc. nr.	Discovery date	Square-subsq.	Depth range Z(D)	Depth Z(datum)	UTM E (x)	UTM N (y)	Stratum	Stratig. comp. (SC)
X16	23/01/2019	A6-NW	-	5.75	283904.61	2724528.44	1605	B
Taxon code	Taxon definition	Length (mm)	Width (mm)	Thickness (mm)	Weight (g)	Raw material class		
E	Blade	33.7	15.8	8.2	4.63	V		



Characterization. This item is a secondary blade or blade-like flake of green limestone, with a prismatic cross-section and a flat ventral side, with the entire surface coated by a thick covering of muddy carbonate sediment. The platform stands out similarly to a natural stem, it is faceted and strongly tilted towards the ventral side, over which the ventral edge projects on

a visible angle. The distal edge is thin, sharp, sinuous, defined by some micro-scars of natural origin. The edges lack evidence of use-wear or intentional post-extraction modifications.

#841. Item no. 3464-17097

Exc. nr.	Discovery date	Square-subsq.	Depth range Z(D)	Depth Z(datum)	UTM E (x)	UTM N (y)	Stratum	Stratig. comp. (SC)
X16	28/01/2019	A6-NW	-	5.72	283904.65	2724528.40	1605	B
Taxon code	Taxon definition	Length (mm)	Width (mm)	Thickness (mm)	Weight (g)	Raw material class		
E	Blade	28.5	10.1	4.2	1.27	V		



Characterization. This item is a primary (cortical) corner blade extracted from a tabular core of rather coarser-grained green limestone, with a yellowish dorsal coating and a rugged ventral surface. This is probably a starter blade, a debitage element only, without any evidence of use-wear or tool functionality on its edges. It has a faceted platform, with a shallow impact protuberance below its ventral edge. The wavy profile of one of the edges is caused by natural fracture inside the depositional matrix.



#842. Item no. 3467-17098

Exc. nr.	Discovery date	Square-subsq.	Depth range Z(D)	Depth Z(datum)	UTM E (x)	UTM N (y)	Stratum	Stratig. comp. (SC)
X16	28/01/2019	A6-NW	-	5.74	283904.76	2724528.22	1605	B
Taxon code	Taxon definition	Length (mm)	Width (mm)	Thickness (mm)	Weight (g)	Raw material class		
E	Blade	32	16.3	7	3.83	V		



Characterization. This artefact is a secondary blade, a green limestone debitage element without use-wear on its edges or other indications of post-extraction anthropic modifications. The wide end is the proximal one, but the platform itself is missing, as the fracture plane implies. However, remains of a small impact bulb on the ventral side suggests that the platform was located not far off from the fracture. The distal end is a feathered termination, slightly rounded and thin-tipped. The blade is curved over the dorsal side, in opposite direction than usual blades. This effect is enhanced by the fact that the right side of the dorsal face contains the extraction scar of a transversal flake; the left side of the dorsal face was used as the platform area for the extraction of this transversal piece, before the separation of this artefact from its parent core.

#843. Item no. 3474-17100

Exc. nr.	Discovery date	Square-subsq.	Depth range Z(D)	Depth Z(datum)	UTM E (x)	UTM N (y)	Stratum	Stratig. comp. (SC)
X16	28/01/2019	A6-SE	-	5.75	283905.30	2724527.71	1605	B
Taxon code	Taxon definition	Length (mm)	Width (mm)	Thickness (mm)	Weight (g)	Raw material class		

E	Blade	21.6	11.2	4.7	1.22	V		
---	-------	------	------	-----	------	---	--	--



Characterization. This artefact is a thinning debitage element, a tertiary blade or blade-like flake of green limestone. Cemented sediment concretions affect both sides in different degrees. The platform partly collapsed under impact. It had a lipped ventral edge, but it broke at some point. A diagonal removal from the proximal-left area, as seen from the ventral side, probably plays the role of a large *erraillure* scar. The small and shallow impact bulb is located at the centre of the ventral side. The edges are sharp, suitable for tool use, but they lack evidence of use-wear or intentional modifications.



#844. Item no. 3628-17108

Exc. nr.	Discovery date	Square -subsq.	Depth range Z(D)	Depth Z(datum)	UTM E (x)	UTM N (y)	Stratum	Stratig. comp. (SC)
X16	01/02/2019	A6-SE	-	5.68	283905.19	2724527.84	1605	B
Taxon code	Taxon definition	Length (mm)	Width (mm)	Thickness (mm)	Weight (g)	Raw material class		
E	Blade	38.5	12.7	9.1	3.72	V		

Characterization. This artefact is a secondary corner blade, extracted from the corner of a tabular core of green limestone, with a naturally flat left side suitable for the ergonomics of a backed knife, and sediment depositions affecting mostly the dorsal left side and the entire

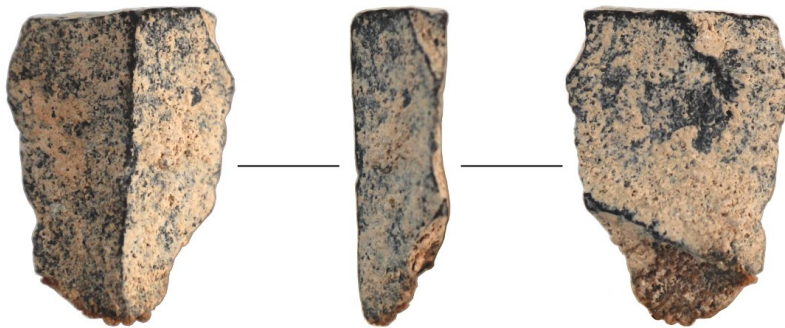


1 cm

ventral side. It has a heavy, wide, flat, unprepared platform, with a well-defined impact bulb on the proximal section of the slightly curved ventral side. The right sharp edge displays certain micro-scarring and micro-notching, but nothing convincing enough to be considered indicators of actual use-wear. The item can only be considered as a debitage element.

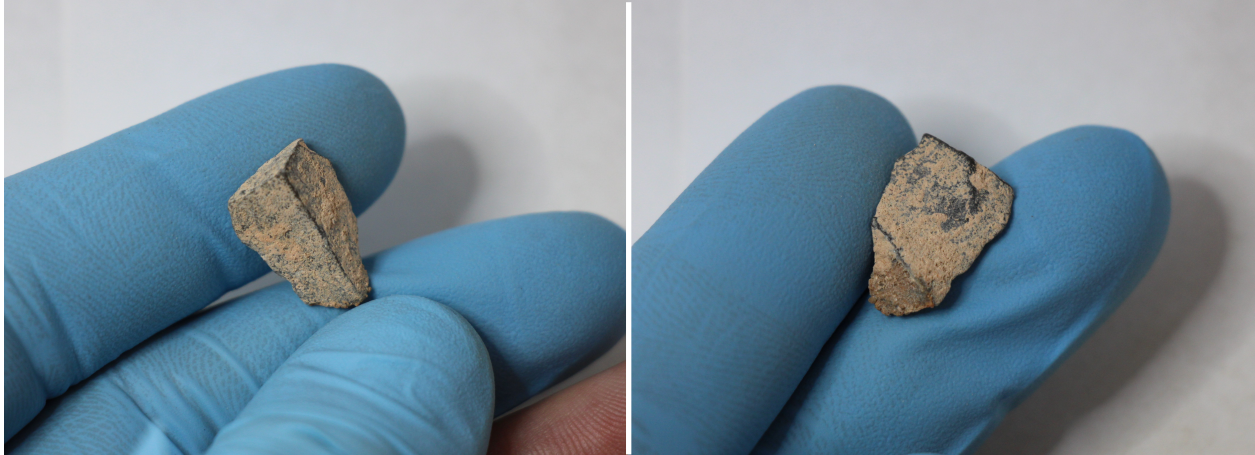


#845. Item no. 3631-17109



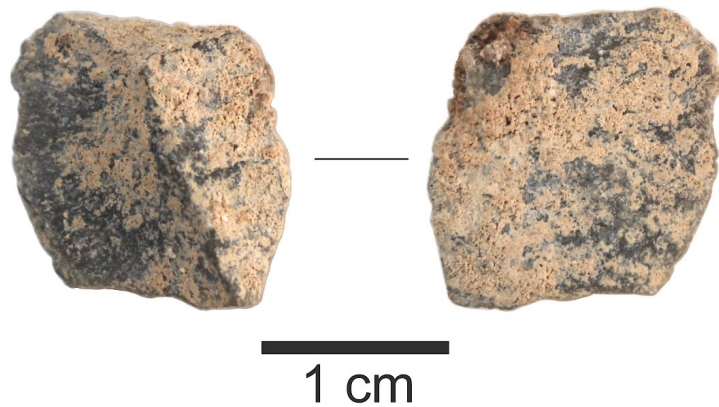
1 cm

Exc. nr.	Discovery date	Square-subsq.	Depth range Z(D)	Depth Z(datum)	UTM E (x)	UTM N (y)	Stratum	Stratig. comp. (SC)
X16	01/02/2019	A6-SE	-	5.71	283905.15	2724527.67	1605	B
Taxon code	Taxon definition	Length (mm)	Width (mm)	Thickness (mm)	Weight (g)	Raw material class		
E	Blade	15.8	11.3	4.8	0.83	V		

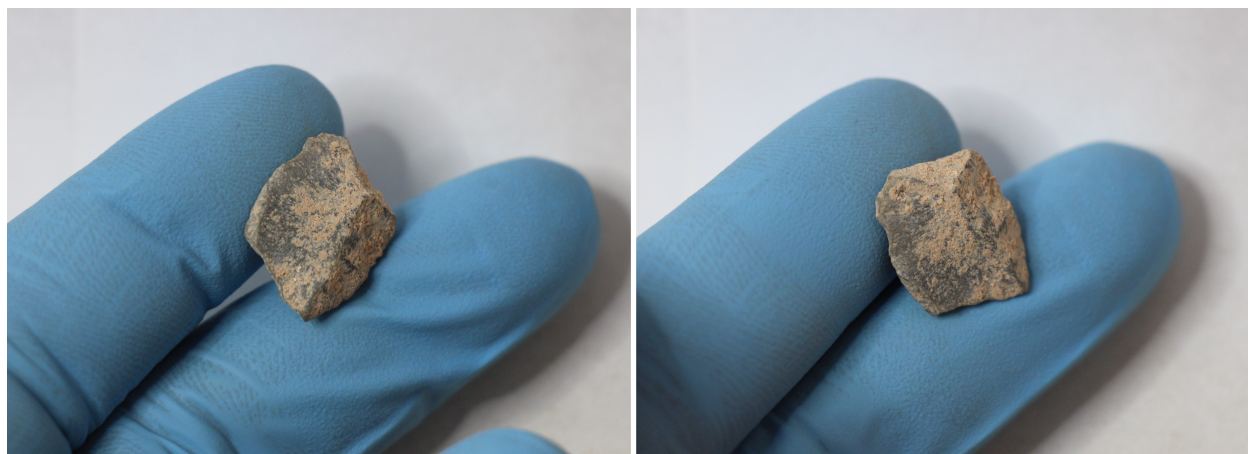


Characterization. This microlith artefact is the proximal fragment of a ridge-following bladelet of dark-green limestone, with both surfaces covered by fine-grained sediment depositions. The whole flat triangular proximal end is the platform, with no specific preparation or associated impact features on its ventral side, which is slightly curved. The distal end is missing, broken by bending fracture. The edges show certain degree of damage, but the evidence is insufficient to consider this as use-wear.

#846. Item no. 3813-17116



Exc. nr.	Discovery date	Square-subsq.	Depth range Z(D)	Depth Z(datum)	UTM E (x)	UTM N (y)	Stratum	Stratig. comp. (SC)
X16	29/01/2019	A6-SE	5.75/5.70	5.73	283905.22	2724527.79	1605	B
Taxon code	Taxon definition	Length (mm)	Width (mm)	Thickness (mm)	Weight (g)	Raw material class		
E	Blade	16	13.2	4.7	1.06	V		



Characterization. This small, squarish artefact is a possible functional microlith, the fragment of a tertiary or secondary blade or micro-blade of green limestone, with the dorsal face containing the scar of at least one previous blade extraction. The presumed distal section is very thin, indicating that the termination of the original blade was not located far from that point. The left edge is thin and convex, suggesting a possible working edge of the microlith, but a closer inspection fails to confirm secure evidence of use-wear.

#847. Item no. 3897-17121

Exc. nr.	Discovery date	Square-subsq.	Depth range Z(D)	Depth Z(datum)	UTM E (x)	UTM N (y)	Stratum	Stratig. comp. (SC)
X16	03/02/2019	A6-SW	-	5.81	283904.70	2724527.99	1605	B
Taxon code	Taxon definition	Length (mm)	Width (mm)	Thickness (mm)	Weight (g)	Raw material class		
E	Blade	44.9	21.5	9	8.40	V		

Characterization. This artefact is a heavy, relatively large blade, that has been potentially modified or used, although the evidence is too weak to define a proper tool-on-blade. The triangular flat surface of the proximal end, tilted towards the high-ridged dorsal side, suggests that the actual platform is no longer visible, probably removed by an impact from the ventral



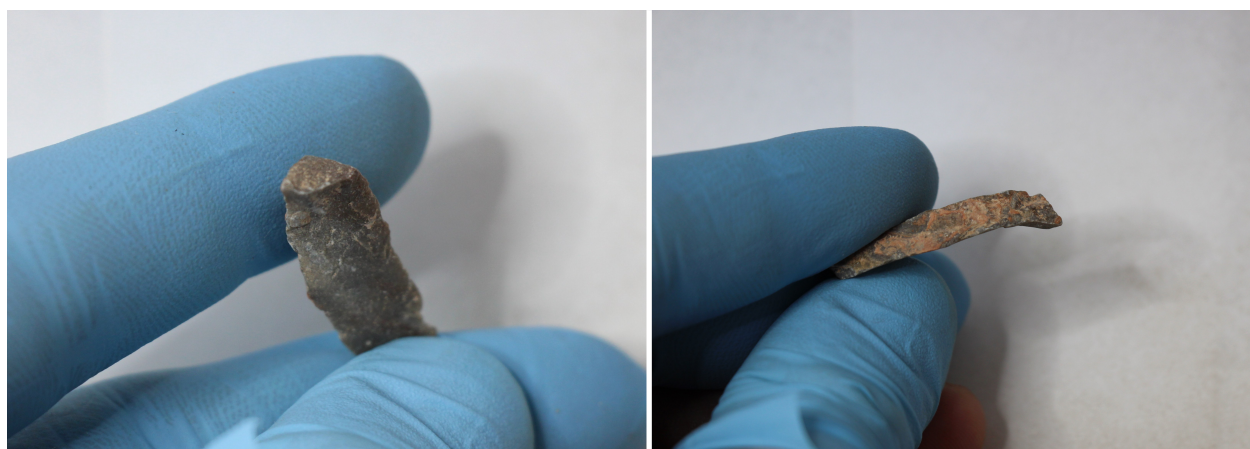
side. A large, deep flake scar on the proximal section of the ventral side suggests a possible intentional removal made for ergonomic purposes, to ease the grabbing of the blade in certain position. The piece is slightly curved over the ventral side. The distal end is convergent, with one side possibly, but not certainly, modified. The smooth sharp concavity defining the left edge is of natural origin, and it lacks clear evidence of use-wear. Both faces of the blade are heavily coated by orange-brown sediment depositions.



#848. Item no. 2926-17051

Exc. nr.	Discovery date	Square-subsq.	Depth range Z(D)	Depth Z(datum)	UTM E (x)	UTM N (y)	Stratum	Stratig. comp. (SC)
X16	19/01/2019	A7-SW	-	5.67	283904.77	2724528.62	1605	B
Taxon code	Taxon definition	Length (mm)	Width (mm)	Thickness (mm)	Weight (g)	Raw material class		
E	Blade	29.5	9.4	4.8	1.42	V		

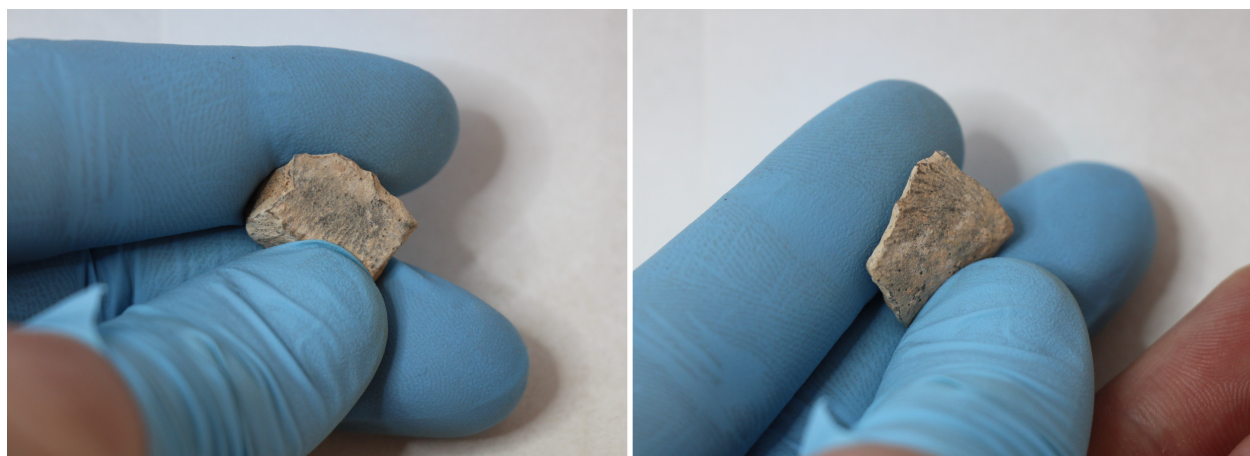
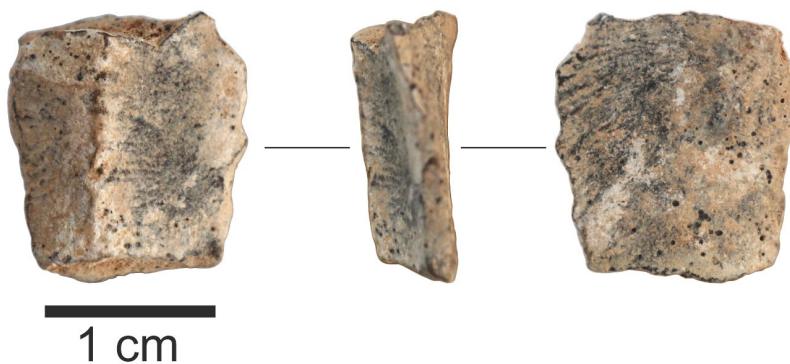
Characterization. This artefact is a secondary, *outrépassé*, high-ridged, probably corner micro-blade of a darker variety of green limestone. The ventral side is slightly curved. The extremity with more curvature is the proximal end, as confirmed by the orientation of the impact striations. The platform itself is missing, broken in diagonal. The distal end is flat and also



diagonal. The edges present only natural damage, without use-wear or human-induced modifications.

#849. Item no. 3978-17126

Exc. nr.	Discovery date	Square-subsq.	Depth range Z(D)	Depth Z(datum)	UTM E (x)	UTM N (y)	Stratum	Stratig. comp. (SC)
X16	05/02/2019	A7-SE	-	5.49	283905.29	2724528.87	1605	B
Taxon code	Taxon definition	Length (mm)	Width (mm)	Thickness (mm)	Weight (g)	Raw material class		
E	Blade	16	15	5.7	1.63	V		



Characterization. This microlith artefact is the proximal fragment of a green limestone secondary blade, with its dorsal side partly cortical and partly bearing the imprint of a previous blade extraction, and coated all over its surface by a whitish carbonate coating. The platform is broken, but the preserved proximal section suggests not much of the platform has been removed. The proximal segment of the ventral side shows a pronounced engrossment towards the right side, as a particular form of impact bulb. The distal half is missing by bending fracture. The damage on edges could have been produced by the employment of the microlith as a tool, however these attributes can be considered questionable as the coating obstructs them.

#850. Item no. 4145-17134

Exc. nr.	Discovery date	Square-subsq.	Depth range Z(D)	Depth Z(datum)	UTM E (x)	UTM N (y)	Stratum	Stratig. comp. (SC)
X16	10/02/2019	C4-NE	5.55/5.50	5.52	283907.42	2724526.19	1605	B
Taxon code	Taxon definition	Length (mm)	Width (mm)	Thickness (mm)	Weight (g)	Raw material class		
E	Blade	26.7	9.3	5.2	1.39	V		

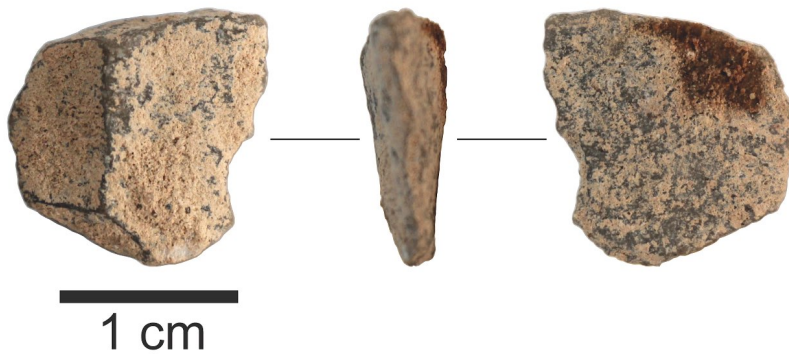
Characterization. This is a green limestone secondary micro-blade, coated all over by cemented sediment depositions. The proximal end is concave, as the platform collapsed under



impact. The distal end is feather-ended. The ventral side is slightly curved. The edges do not present evidence of use-wear.

#851. Item no. 4148-17136

Exc. nr.	Discovery date	Square-subsq.	Depth range Z(D)	Depth Z(datum)	UTM E (x)	UTM N (y)	Stratum	Stratig. comp. (SC)
X16	11/02/2019	B5-SW	5.65/ 5.60	5.62	283905.77	2724526.79	1605/ 1604A	B
Taxon code	Taxon definition	Length (mm)	Width (mm)	Thickness (mm)	Weight (g)	Raw material class		
E	Blade	14.5	14.2	5.1	1.08	V		



Characterization. This artefact is a presumed microlith element, the distal fragment of a green limestone tertiary blade. The fracture plane is flat, oriented diagonally. The dorsal side has a

low ridge, separating two previous extraction scars. The ventral side is smooth, slightly convex. The edges are sharp, with some damage on them, but the evidence is not convincing enough to consider them potential use-wear from the use of the microlith. However, this is probable.

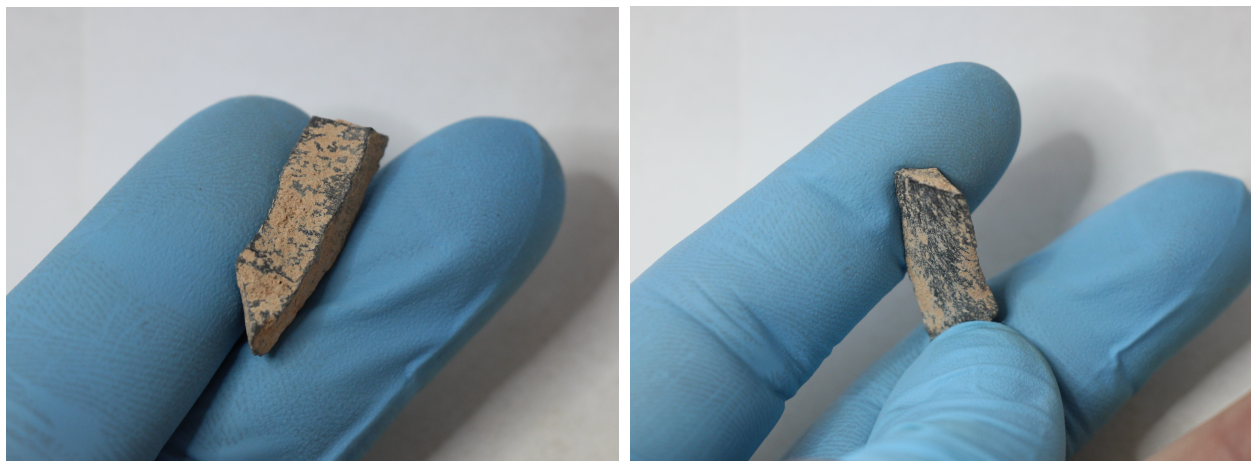


#852. Item no. 4147-17135

Exc. nr.	Discovery date	Square-subsq.	Depth range Z(D)	Depth Z(datum)	UTM E (x)	UTM N (y)	Stratum	Stratig. comp. (SC)
X16	10/02/2019	C4-SE	5.55/5.50	5.51	283907.17	2724525.69	1605/1606	B
Taxon code	Taxon definition	Length (mm)	Width (mm)	Thickness (mm)	Weight (g)	Raw material class		
E	Blade	25.5	9.5	4.5	1.22	V(b)		

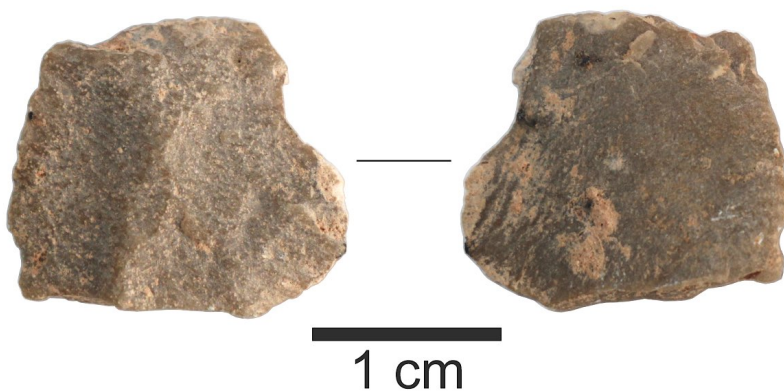


Characterization. This artefact is a narrow, fragmentary micro-blade, seemingly secondary, made of black limestone. The dorsal side is more affected by patina and sediment concretions. Both ends, proximal and distal, are missing by fracture. The edges are sharp and still well preserved, but they lack evidence of use-wear or intentional post-extraction modifications.



#853. Item no. 3930-16851

Exc. nr.	Discovery date	Square-subsq.	Depth range Z(D)	Depth Z(datum)	UTM E (x)	UTM N (y)	Stratum	Stratig. comp. (SC)
X16	04/02/2019	B1-NE	6.35/6.30	6.31	283906.07	2724523.44	1607	B
Taxon code	Taxon definition	Length (mm)	Width (mm)	Thickness (mm)	Weight (g)	Raw material class		
E	Blade	16	18.2	3	1.04	V		



Characterization. This artefact is the proximal fragment of a thin tertiary blade of green limestone. It has a low longitudinal ridge, and the convex right edge presents a natural notch on the proximal segment. The distal section is missing, lost by transversal fracture. The platform is thin, with a white-marked impact dot on its central-right half, better visible from the ventral side. The platform was prepared by grinding the edge of the parent core, in order to strengthen and isolate the impact spot, and the action produced short wide scars on the immediate area of the dorsal side. The left edge is straight, with a wavy profile, and possible



use-wear. However, the erosion of the edge could have also been produced by natural post-deposition processes, as it lacks the characteristic micro-scars and micro-notches.



#854. Item no. 3948-17123



1 cm

Exc. nr.	Discovery date	Square-subsq.	Depth range Z(D)	Depth Z(datum)	UTM E (x)	UTM N (y)	Stratum	Stratig. comp. (SC)
X16	04/02/2019	B1-NE	6.35/ 6.30	6.31	283906.27	2724523.09	1607	B
Taxon code	Taxon definition	Length (mm)	Width (mm)	Thickness (mm)	Weight (g)	Raw material class		
E	Blade	30	9	4.4	1.30	V		

Characterization. This item is a primary corner micro-blade, extracted by percussion from the corner of a tabular core of green limestone. The proximal sector is difficult to define between the two extremities, as both ends have certain degree of damage, and the visible features do not support a positive identification for either end. This is probably a starter blade, adebitage element only, as the lateral edges show no secure evidence of use-wear or tool functionality.



#855. Item no. 3996-17128



Exc. nr.	Discovery date	Square-subsq.	Depth range Z(D)	Depth Z(datum)	UTM E (x)	UTM N (y)	Stratum	Stratig. comp. (SC)
X16	05/02/2019	B1-NE	-	6.30	283906.34	2724523.84	1607	B
Taxon code	Taxon definition	Length (mm)	Width (mm)	Thickness (mm)	Weight (g)	Raw material class		
E	Blade	18	12.6	5.5	1.35	V		

Characterization. This squarish item is the distal fragment of a blade, extracted from a tabular core of green limestone, as suggested by the flat left side and the dorsal right angle. The proximal section is missing. The ventral side is rugged, and it presents a diagonal channel that corresponds to a “wave” formed as an impact ripple. The edges are sharp, but not used. This item may have been conceived as a microlith element, meant to be used as part of a composite tool, but never utilized.



#856. Item no. 3541-17102

Exc. nr.	Discovery date	Square-subsq.	Depth range Z(D)	Depth Z(datum)	UTM E (x)	UTM N (y)	Stratum	Stratig. comp. (SC)
X16	28/01/2019	C2-SW	-	5.98	283907.06	2724523.66	1607/ 1608A	B
Taxon code	Taxon definition	Length (mm)	Width (mm)	Thickness (mm)	Weight (g)	Raw material class		
E	Blade	29.5	7.7	5.3	1.23	V		



Characterization. This artefact is a high-ridged tertiary or secondary, probably corner, blade that is slightly curved over its dorsal side, and has a sharply feathered distal end. The platform

is broken, with its original surface removed probably during impact, but its ventral side reveals a lipped edge and a small, elongated *erraillure* scar to the left. This artefact remains as a debitage element, a thinning item, without evidence of use-wear on edges.



#857. Item no. 3878-17120

Exc. nr.	Discovery date	Square-subsq.	Depth range Z(D)	Depth Z(datum)	UTM E (x)	UTM N (y)	Stratum	Stratig. comp. (SC)
X16	03/02/2019	C2-SE	-	5.89	283907.33	2724523.83	1607/ 1608A	B
Taxon code	Taxon definition	Length (mm)	Width (mm)	Thickness (mm)	Weight (g)	Raw material class		
E	Blade	29.7	11.7	5.5	2.04	V		



Characterization. This artefact is a green limestone secondary blade, a debitage thinning element without traces of use-wear or other anthropic modifications on its edges. At least two or three flake scars meet on the eroded dorsal side. The platform is strong, dihedral, tilted to the left, with a marked impact bulb below its ventral edge. The ventral side has a rugged topography. This is probably an *outrépassé* blade, as suggested by the plunging distal end, which seemingly contains a portion of the opposite edge of the parent core.



#858. Item no. 3260-17080

Exc. nr.	Discovery date	Square-subsq.	Depth range Z(D)	Depth Z(datum)	UTM E (x)	UTM N (y)	Stratum	Stratig. comp. (SC)
X16	22/01/2019	C3-SW	-	5.84	283906.98	2724524.85	1608A	B
Taxon code	Taxon definition	Length (mm)	Width (mm)	Thickness (mm)	Weight (g)	Raw material class		
E	Blade	34.4	12.8	7.1	3.06	V		



Characterization. This artefact is a ridge-following secondary blade, extracted from the corner of a tabular core of green limestone, with the dorsal planes meeting at right angle, and its dorsal right side flat and cortical. The platform is flat, triangular, unprepared, non-lipped, with a small *erailure* scar below its ventral edge. The shape of the blade is suitable for the function of a backed knife cutting tool, with a flat grabbing section and an opposite sharp convex working



edge on the left margin of the blade, but this margin bears no certain indications of use-wear or other functional clues, meaning that the blade was never employed as a tool.

