

II.14. Taxon O: Geometrics (8 items; #960–967)

#960. Item no. 2354-17200

Exc. nr.	Discovery date	Square-subsq.	Depth range Z(D)	Depth Z(datum)	UTM E (x)	UTM N (y)	Stratum	Stratig. comp. (SC)
X16	11/01/2019	B2-SW	6.60/ 6.55	6.56	283905.77	2724523.79	1601/ 1604	B
Taxon code	Taxon definition	Length (mm)	Width (mm)	Thickness (mm)	Weight (g)	Raw material class		
O	Geometrics	24	26.2	7.2	5.02	V		



Characterization. This rectangular artefact is an interesting and unique type of Geometrics. Unlike the rest of the finds in its class, usually made by the modification of laminae, this particular one is made by the edge-fracturing of a cortical flake. The initial blank was extracted from the corner area of a tabular nodule of dark-green limestone. The percussion impact was propitiated to the angle of the corner, resulting in a platform pronouncedly bending over the ventral side, in a morphological combination of lip and strong impact protuberance. The proximal and left edges of the flake contain the flat margins of the parent core. The other two

edges were carefully broken into equal, straight edges. The ventral side is rugged. Apart from the modifications that shaped the piece into a rectangle, no other interventions or use-wear are visible on the edges.



#961. Item no. 2991-17202

Exc. nr.	Discovery date	Square-subsq.	Depth range Z(D)	Depth Z(datum)	UTM E (x)	UTM N (y)	Stratum	Stratig. comp. (SC)
X16	20/01/2019	A3-SW	6.55/6.50	6.52	283904.72	2724524.59	1604	B
Taxon code	Taxon definition	Length (mm)	Width (mm)	Thickness (mm)	Weight (g)	Raw material class		
O	Geometrics	31.4	14.3	3.9	1.86	V		



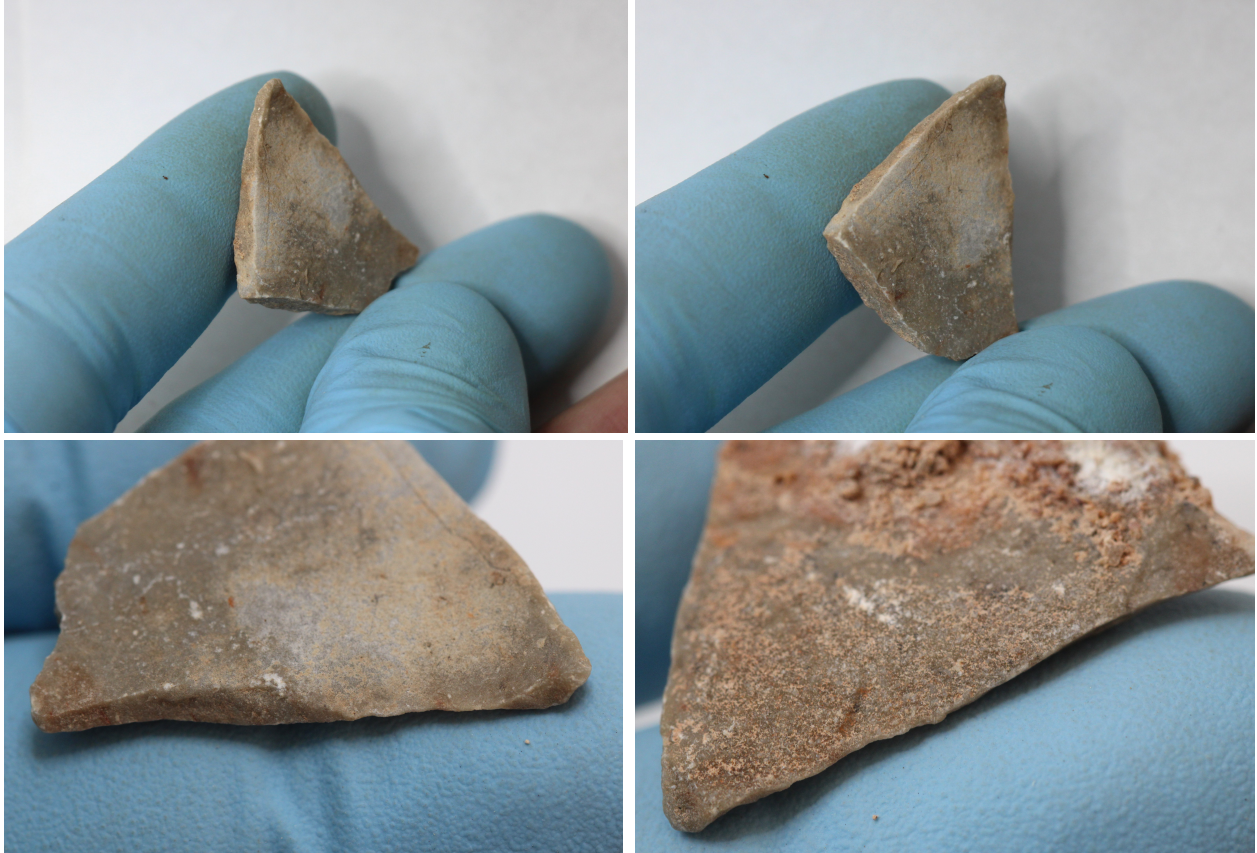
Characterization. This artefact is a rhomboidal Geometric, created by the edge fracturing of a green limestone lamina or plaquette. One face is cortical. None of the edges present natural flat planes; all four are the result of controlled fracturing. The item is remarkably symmetrical. As with all other Geometrics, no use-wear is to be expected on the margins.



#962. Item no. 3018-17203

Exc. nr.	Discovery date	Square-subsq.	Depth range Z(D)	Depth Z(datum)	UTM E (x)	UTM N (y)	Stratum	Stratig. comp. (SC)
X16	20/01/2019	B3-SE	-	5.98	283906.16	2724524.77	1604	B
Taxon code	Taxon definition	Length (mm)	Width (mm)	Thickness (mm)	Weight (g)	Raw material class		
O	Geometrics	25.7	23.4	4.4	2.40	V		





Characterization. This artefact is a triangular Geometric, made by the edge-modification of a green limestone flake extracted from a tabular core. One edge preserves a portion of the natural square margin removed from the parent core. The other two edges are entirely modified by controlled fracturing. The resulting point-like shape is asymmetrical, both in axial shape as in its thickness across the piece. This is probably a failed product.

#963. Item no. 3617-17216



Exc. nr.	Discovery date	Square-subsq.	Depth range Z(D)	Depth Z(datum)	UTM E (x)	UTM N (y)	Stratum	Stratig. comp. (SC)
X16	01/02/2019	B5-NW	-	5.79	283905.70	2724527.05	1604A	B
Taxon code	Taxon definition	Length (mm)	Width (mm)	Thickness (mm)	Weight (g)	Raw material class		
O	Geometrics	27.2	22.2	7.5	4.77	V		

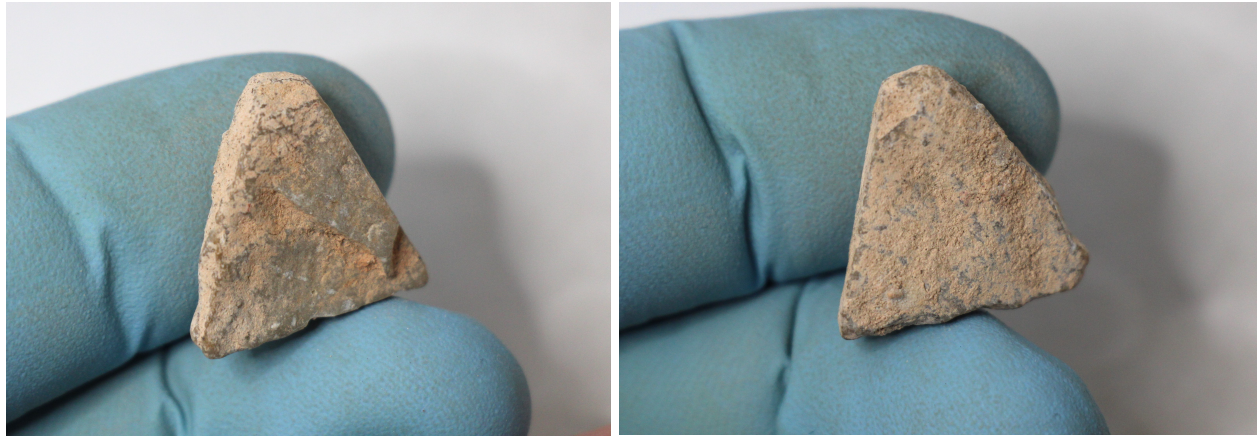
Characterization. This item is a thick triangular Geometric, made by edge-fracturing a rugged plaquette or lamina of green limestone. All three edges are anthropic, shaped by controlled fracturing. The surfaces are uneven, and are both affected by localized depositions of cemented sediment.



964. Item no. 3780-17209

Exc. nr.	Discovery date	Square-subsq.	Depth range Z(D)	Depth Z(datum)	UTM E (x)	UTM N (y)	Stratum	Stratig. comp. (SC)
X16	02/02/2019	C4-SW	-	5.71	283907.02	2724525.85	1604A	B
Taxon code	Taxon definition	Length (mm)	Width (mm)	Thickness (mm)	Weight (g)	Raw material class		
O	Geometrics	17.8	18.2	4.4	1.67	V		





Characterization. This item is a small triangular Geometric, made on a green limestone lamina or on a thick flake extracted from a tabular core. The two faces are uneven. One edge is thicker and naturally square, part of the parent core or a natural edge of the lamina, while the other two are shaped by controlled fracturing.

#965. Item no. 3098-17300

Exc. nr.	Discovery date	Square-subsq.	Depth range Z(D)	Depth Z(datum)	UTM E (x)	UTM N (y)	Stratum	Stratig. comp. (SC)
X16	20/01/2019	B3-SE	6.06/6.00	6.02	283906.37	2724524.94	1604A/1605	B
Taxon code	Taxon definition	Length (mm)	Width (mm)	Thickness (mm)	Weight (g)	Raw material class		
O	Geometrics	19.4	17.6	4.1	1.53	V		



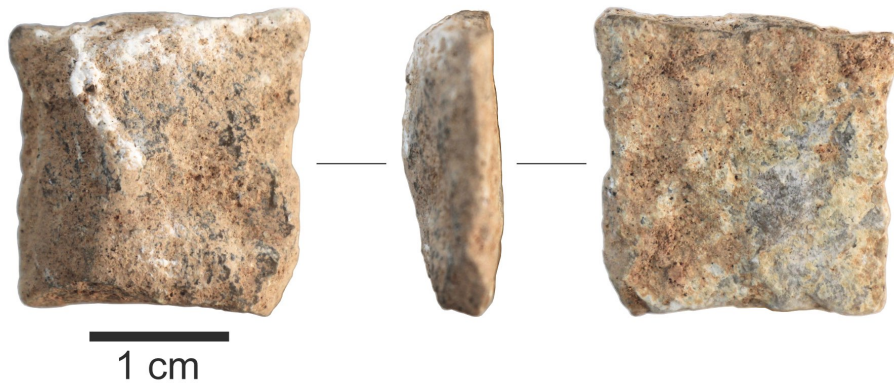
Characterization. This item is a triangular Geometric, made by controlled edge fracturing on a flat flake or lamina of green limestone. All edges are the result of controlled snapping. The tip is broken. The apparent notches at the basal corners may also be intentional. One side is

covered with sediment concretions. The other one, the presumed ventral side of the blank, is slightly concave.



#966. Item no. 4154-17212

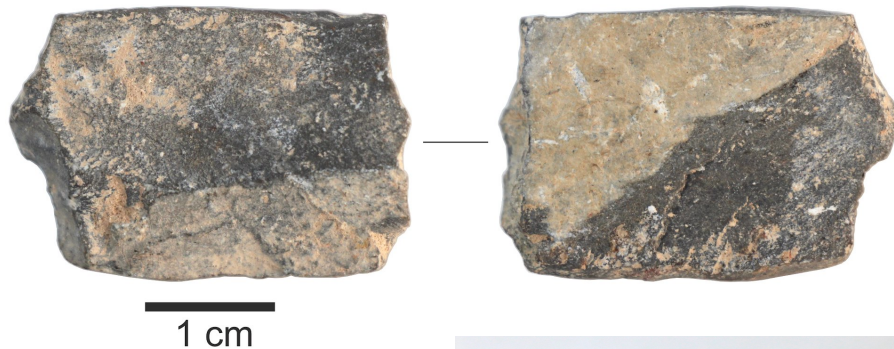
Exc. nr.	Discovery date	Square-subsq.	Depth range Z(D)	Depth Z(datum)	UTM E (x)	UTM N (y)	Stratum	Stratig. comp. (SC)
X16	11/02/2019	C4-NE	5.50/5.45	5.47	283907.12	2724526.04	1605/1606	B
Taxon code	Taxon definition	Length (mm)	Width (mm)	Thickness (mm)	Weight (g)	Raw material class		
O	Geometrics	22.2	21.8	7.6	4.52	V		



Characterization. This artefact has been classified as a square Geometric, although it could have been defined as a microlith, as well. The edges, all have almost the same exact length, supporting intentionality. This is the medial fragment of a blade of green limestone, completely covered by orange-brown, cemented, carbonate sediment coating. The lateral edges are the natural edges of the blade, and the coating does not allow to define whether they received retouch or not in order to adjust their shape, or whether they contain any use-wear. The other two edges represent the fracture planes that removed the proximal and distal sections of the blade. The dorsal side has a low, eroded ridge, moved to the left. The ventral side is almost flat.

#967. Item no. 3433-17208

Exc. nr.	Discovery date	Square -subsq.	Depth range Z(D)	Depth Z(datum)	UTM E (x)	UTM N (y)	Stratum	Stratig. comp. (SC)
X16	23/01/2019	B2-NE	-	5.95	283906.48	2724524.34	1607/1608A	B
Taxon code	Taxon definition	Length (mm)	Width (mm)	Thickness (mm)	Weight (g)	Raw material class		
O	Geometrics	31.2	21.3	6.7	7.63	V		



Characterization. This artefact is a Geometric, a rectangular shape made intentionally by controlled fracturing of the edges of a dark-green limestone lamina or plaquette. None of the edges is a naturally flat edge, all four are the product of fracture. The shorter edges are asymmetrical. One of the faces has an interesting bichromia, with two colors divided by a diagonal line, of evident natural origin, although the feature may have represented an additional incentive for the maker of the artefact to choose this particular piece for the planned modification. As it is common with Geometrics, no use-wear or additional modifications are to be seen on the edges.

