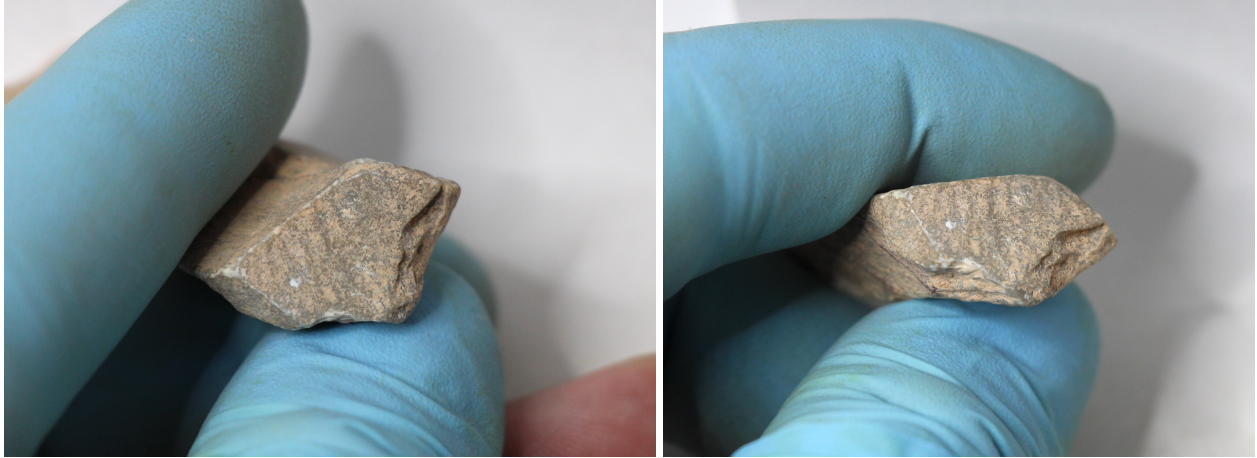


IV.7. Taxon E: Blades
 (9 items; #1019–1027)

#1019. Item no. 453-11033

Exc. nr.	Discovery date	Square-subsq.	Depth range Z(D)	Depth Z(datum)	UTM E (x)	UTM N (y)	Stratum	Stratig. comp. (SC)
X12	01/02/2016	i6	-1.50/ -1.55	-1.53	283921.36	2724535.27	1212	C
Taxon code	Taxon definition	Length (mm)	Width (mm)	Thickness (mm)	Weight (g)	Raw material class		
E	Blade	47.2	22.6	11.1	13.09	V		



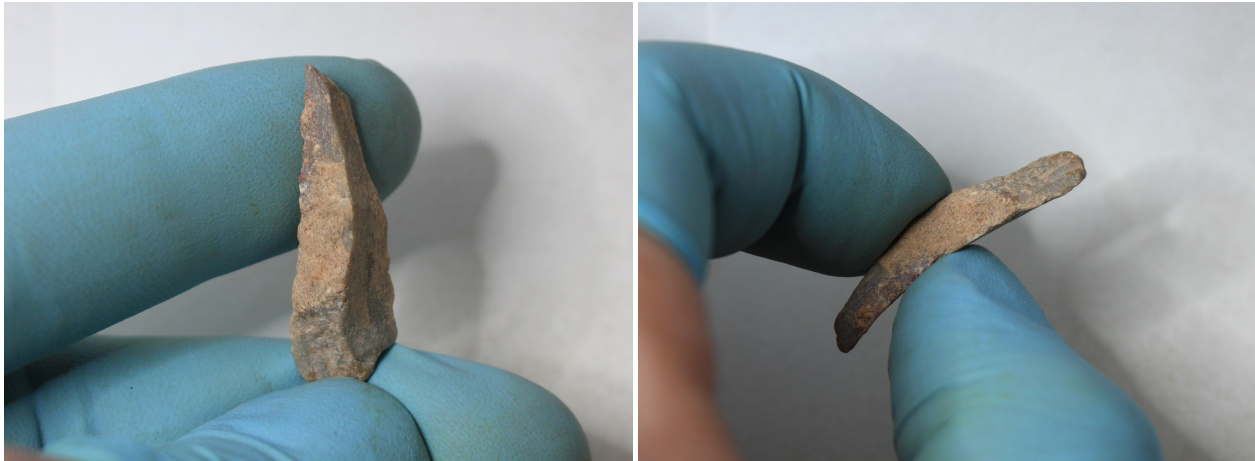


Characterization. This artefact is a large, heavy, fragmentary, secondary corner blade extracted from a tabular core of green limestone. Unlike most of the corner blades that use to present simple, flat, unprepared platforms, this artefact displays an evidently prepared platform, isolated by marginal percussion retouch that also derived into collateral extractions from the dorsal side. The blade required a strong impact, which actually landed much further inwards, away from the actually prepared spot. The result was a thick proximal section, with a prominent impact protuberance on the ventral edge of the platform. The distal end is missing, removed by fracture. The dorsal side is high-ridged, partially cortical, without post-extraction flake scars. The edges of the blade do not show evidence of use-wear. The blade may have been intended as a tool, but was not employed as such before its disposal.

#1020. Item no. 455-9916



Exc. nr.	Discovery date	Square-subsq.	Depth range Z(D)	Depth Z(datum)	UTM E (x)	UTM N (y)	Stratum	Stratig. comp. (SC)
X12	01/02/2016	i6	-1.50/ -1.55	-1.54	283920.96	2724534.97	1212	C
Taxon code	Taxon definition	Length (mm)	Width (mm)	Thickness (mm)	Weight (g)	Raw material class		
E	Blade	29.5	9.5	5.4	1.3	V		

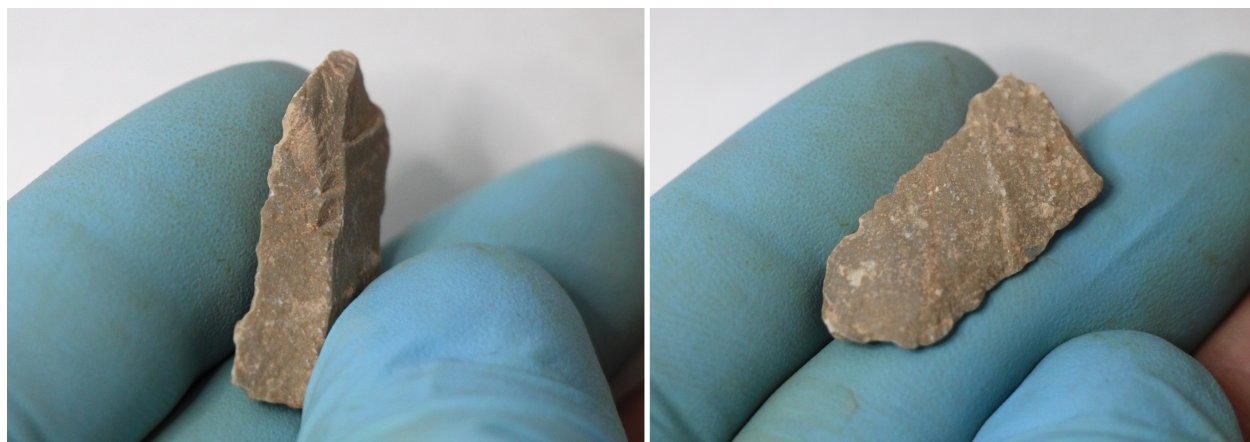


Characterization. This small item is a secondary microblade, curved over its ventral side, and with a sharp feathered distal termination. The platform area is broken and difficult to assess. The edges lack any evidence of use-wear, so this ridge-following debitage element was not yet employed as a tool.

#1021. Item no. 487-11115



Exc. nr.	Discovery date	Square-subsq.	Depth range Z(D)	Depth Z(datum)	UTM E (x)	UTM N (y)	Stratum	Stratig. comp. (SC)
X12	02/02/2016	i6	-1.55/ -1.70	-1.58	283921.16	2724534.97	1212	C
Taxon code	Taxon definition	Length (mm)	Width (mm)	Thickness (mm)	Weight (g)	Raw material class		
E	Blade	25.3	12	3.9	1.37	V		

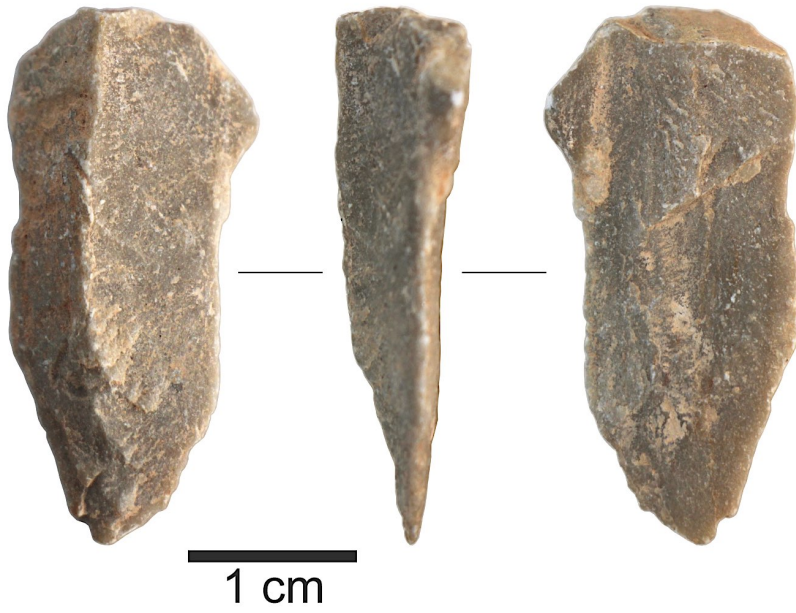


Characterization. This small item is a secondary micro-blade extracted from a core of green limestone. The proximal end is the pointy one. The platform is small, punctiform, not ground. The ventral side shows a shallow, but wide impact bulb. The distal section is missing by fracture. The lateral edges lack comprehensive evidence of use-wear, although certain traces of possible utilization appear on them. A first look at the artefact gives the impression the edges were indeed used, but the serrated aspect is rather the effect of the natural marginal terminations of impact ripples from the ventral side, plus aggregated natural damage. The microblade may have been conceived as a microlith implement.

#1022. Item no. 469-11054

Exc. nr.	Discovery date	Square-subsq.	Depth range Z(D)	Depth Z(datum)	UTM E (x)	UTM N (y)	Stratum	Stratig. comp. (SC)
X12	02/02/2016	J4	-1.70/ -1.77	-1.73	283922.34	2724533.08	1212	C
Taxon code	Taxon definition	Length (mm)	Width (mm)	Thickness (mm)	Weight (g)	Raw material class		
E	Blade	32	15.1	7.8	2.91	V		

Characterization. This item is a secondary blade of green limestone, with the left side preserving its cortex, and a sharp feathered distal end. The cortical platform is flat, unprepared, and tilted towards the ventral side. There is no visible use-wear on edges.



#1023. Item no. 492-11131



Exc. nr.	Discovery date	Square-subsq.	Depth range Z(D)	Depth Z(datum)	UTM E (x)	UTM N (y)	Stratum	Stratig. comp. (SC)
X12	02/02/2016	K4	-2.23/ -2.33	-2.28	283923.06	2724532.82	1212	C
Taxon code	Taxon definition	Length (mm)	Width (mm)	Thickness (mm)	Weight (g)	Raw material class		
E	Blade	38	16.7	9.3	6.52	V		

Characterization. This artefact is an *outrépassé* cortical corner blade, probably a starter blade, extracted from a tabular nodule of green limestone. The proximal end is flat, natural, without specific preparation, confirmed by the square-shaped impact bulb on the ventral side. The left edge reveals an apparently used section, but the damage is all natural, unrelated to specific anthropic activities.



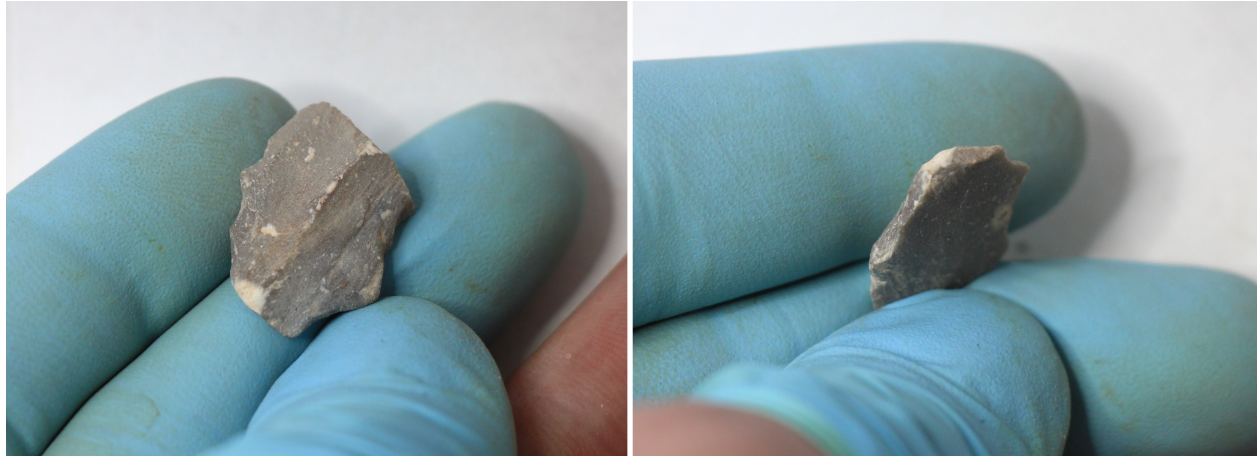
#1024. Item no. 1992-13214

Exc. nr.	Discovery date	Square-subsq.	Depth range Z(D)	Depth Z(datum)	UTM E (x)	UTM N (y)	Stratum	Stratig. comp. (SC)
X12	24/01/2017	M4-NE	-2.60/ -2.70	-2.63	283925.39	2724533.08	1212	C
Taxon code	Taxon definition	Length (mm)	Width (mm)	Thickness (mm)	Weight (g)	Raw material class		
E	Blade fragment	18.2	15	5.7	1.53	V		



1 cm

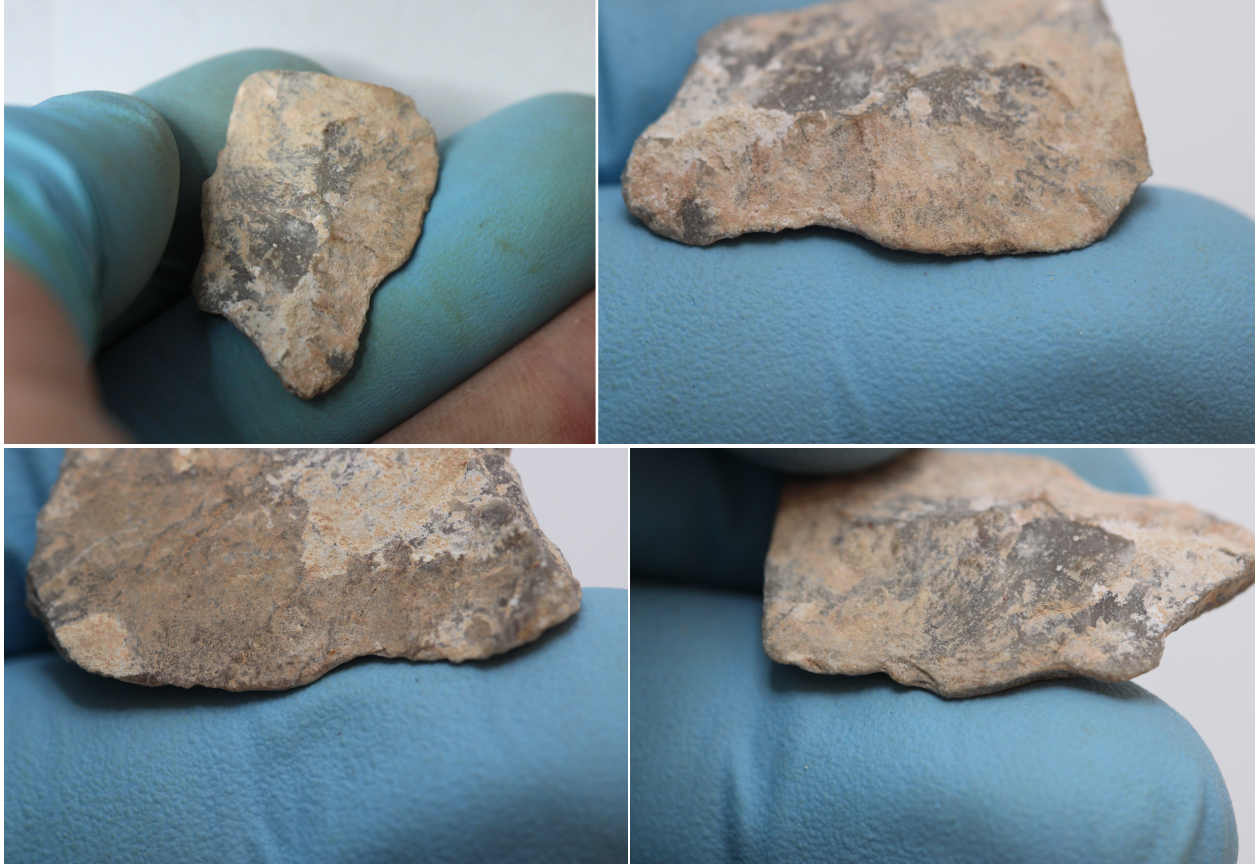
Characterization. This artefact is the proximal fragment of a ridge-following blade. The item has a ground, well-defined, white-dotted platform, although the actual impact was placed to the left of it, producing a small oval, lipped platform. The edges present a serrated aspect, but lack clear evidence of anthropic use-wear.



#1025. Item no. 413-10941

Exc. nr.	Discovery date	Square-subsq.	Depth range Z(D)	Depth Z(datum)	UTM E (x)	UTM N (y)	Stratum	Stratig. comp. (SC)
X12	31/01/2016	M6-N	-2.40/ -2.60	-2.50	283924.79	2724535.48	1212	C
Taxon code	Taxon definition	Length (mm)	Width (mm)	Thickness (mm)	Weight (g)	Raw material class		
E	Blade	27.2	18	5.1	2.51	V		





Characterization. This artefact is a thin, fragmentary, tertiary blade of green limestone, heavily coated by yellow-brown carbonate patina on both faces. The proximal section with the platform is missing, removed by fracture. The distal section is also missing, removed by a bending fracture, together with a part of the left edge. The edges of the blade may reveal indicators of intentional use-wear, but the evidence is obstructed by the carbonate coating.

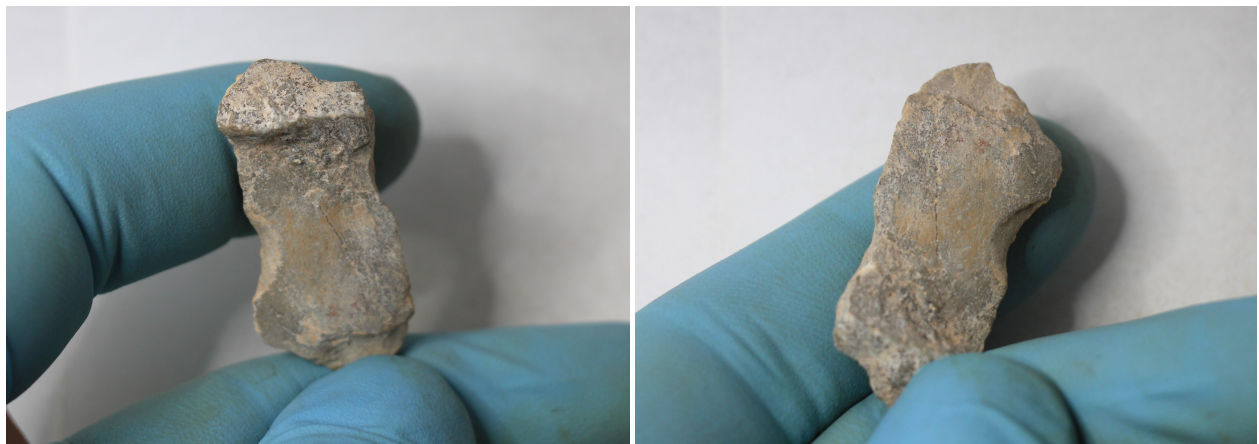
#1026. Item no. 2162-12952

Exc. nr.	Discovery date	Square-subsq.	Depth range Z(D)	Depth Z(datum)	UTM E (x)	UTM N (y)	Stratum	Stratig. comp. (SC)
X12	27/01/2017	M6-NE	-3.00/ -3.10	-3.06	283925.44	2724535.33	1219	C
Taxon code	Taxon definition	Length (mm)	Width (mm)	Thickness (mm)	Weight (g)	Raw material class		
E	Blade	35.3	15.9	8.5	4.12	V		

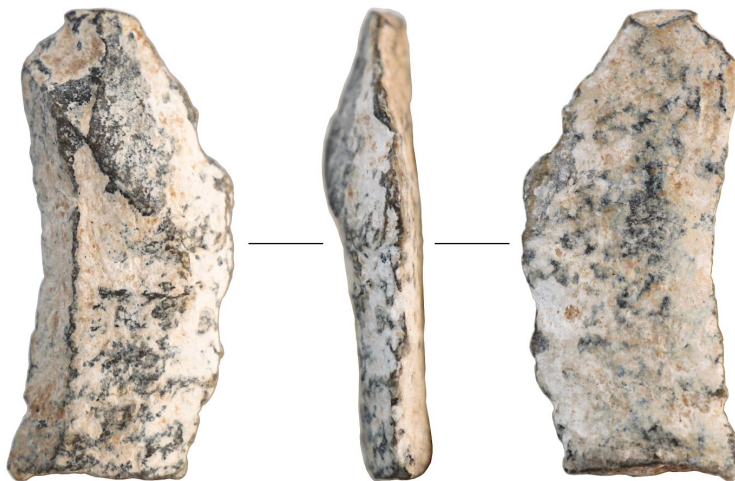
Characterization. This item is a coarse blade with the dorsal side covered by thick orange-brown sediment concretions. The platform is large and flat, strongly leaning towards the ventral side. The distal end is broken. The edges do not present secure evidence of use-wear. The big notch on one of the long edges could have been started intentionally, but not used any further.



1 cm



#1027. Item no. 646-12261



1 cm

Exc. nr.	Discovery date	Square-subsq.	Depth range Z(D)	Depth Z(datum)	UTM E (x)	UTM N (y)	Stratum	Stratig. comp. (SC)
X12	07/02/2016	i6/ i7	-2.60/ -2.70	-2.65	283920.76	2724535.47	1222	C
Taxon code	Taxon definition	Length (mm)	Width (mm)	Thickness (mm)	Weight (g)	Raw material class		
E	Blade	31.8	14.4	6.2	3.15	V		



Characterization. This artefact is a blade of green limestone coated by a heavy layer of white-yellowish carbonates. The morphological features of the piece indicate that the small, oval platform is located at the smaller end, slightly lipped, and inclined towards the ventral side. The distal end is missing by fracture. The left side is defined by a narrow flat edge, suitable as the proximal section for a cutting tool, but the irregular serration on the right edge, mostly obliterated by the carbonate coating, lacks sufficient evidence in favor of an anthropic use.

