

IV.12. Taxon Ht: Transversal points
 (11 items; #1058–1068)

#1058. Item no. 460-9924

Exc. nr.	Discovery date	Square-subsq.	Depth range Z(D)	Depth Z(datum)	UTM E (x)	UTM N (y)	Stratum	Stratig. comp. (SC)
X12	02/02/2016	J4-S/SW	-	-1.77	283921.09	2724532.98	1212	C
Taxon code	Taxon definition	Length (mm)	Width (mm)	Thickness (mm)	Weight (g)	Raw material class		
Ht	Transversal point	32.4	17.2	5.2	2.97	V(b)		



Characterization. This artefact is a potential transversal point, made on a secondary transversal flake of black limestone, curved over its ventral side. The location of the platform is where expected, and confirmed by the reminiscence of a small impact protuberance on the ventral side, but it was removed as part of the thinning of the basal side of the point. The scars related to this action are visible on the dorsal side, shared with a section of cortical surface along the distal edge. The distal edge was shaped into the left edge of the point by trimming. The other edge of the point (the original flake's proximal edge) was left untouched, containing a portion of the parent core. The left side of the blank became the rounded basal end of the point by percussion retouch thinning. By its stratigraphic context, this artefact is among the oldest transversal points found in the excavation X12.

#1059. Item no. 1998-13586

Exc. nr.	Discovery date	Square-subsq.	Depth range Z(D)	Depth Z(datum)	UTM E (x)	UTM N (y)	Stratum	Stratig. comp. (SC)
X12	24/01/2017	M5-NE	-2.60/-2.70	-2.62	283925.19	2724534.28	1212	C
Taxon code	Taxon definition	Length (mm)	Width (mm)	Thickness (mm)	Weight (g)	Raw material class		
Ht	Transversal point	41	22	6.3	6.75	V(b)?		



Characterization. This artefact is a laurel leaf-shaped transversal point or an advanced transversal point preform, made on a thick transversal flake extracted from a core of an unidentified type of limestone. The piece is badly eroded and patinated, to the point that the raw material is uncertain. It is possible that the material is black limestone. The flake has a strong wide platform, lipped on its ventral edge, and with an associated impact protuberance.



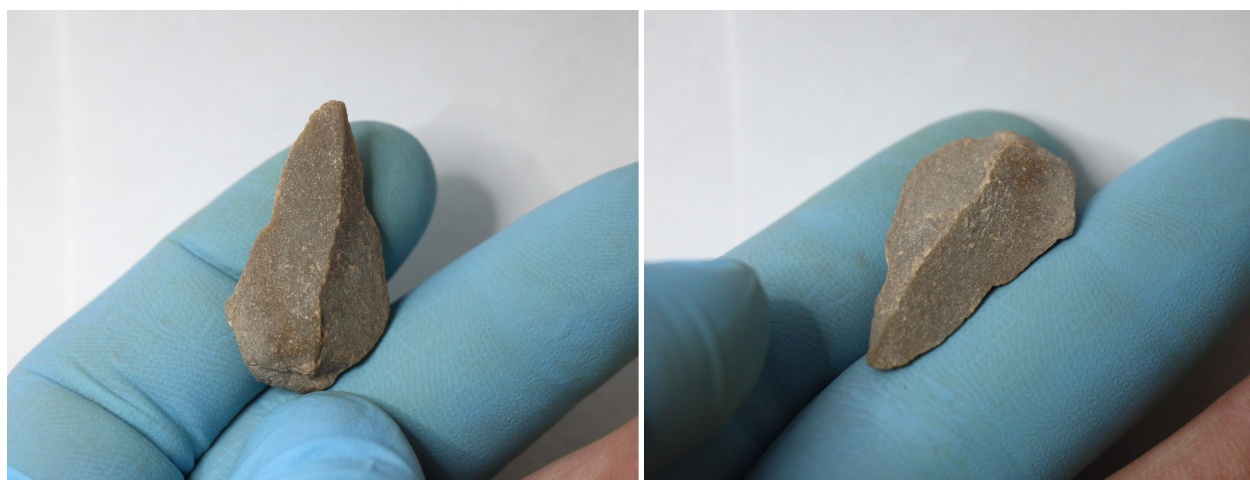
The large platform was originally part of a longer square-shaped proximal edge. After the extraction of the blank, this edge was thinned by unifacial flaking, forming one of the distal edges of the point. The distal edge of the transversal flake was thin on its right half, and thicker, with the imprint of a hinge termination, on the left half. Minimal edge trimming produced a convex edge for the point preform, but the hinge-fracture area was not thinned down. Overall, the preform presents a good lateral symmetry.



#1060. Item no. 484-9944



Exc. nr.	Discovery date	Square-subsq.	Depth range Z(D)	Depth Z(datum)	UTM E (x)	UTM N (y)	Stratum	Stratig. comp. (SC)
X12	02/02/2016	i6	-1.55/ -1.70	-1.64	283920.91	2724534.82	1217	C
Taxon code	Taxon definition	Length (mm)	Width (mm)	Thickness (mm)	Weight (g)	Raw material class		
Ht	Transversal point?	28.9	16.9	6	2.35	V		



Characterization. This artefact is a possible point made on a tertiary transversal flake of high-quality, fine-grained green limestone. The problem with this item is that it barely presents any modifications on the margins, something that puts its functionality in doubt. The flake shows a partly collapsed, lipped platform on its proximal-right edge. The ventral side, mostly convex, reveals deep ripples produced by hard impact. The flake has a sharp feathered termination and a longitudinal ridge. The distal edge of the blank (right edge of the point, if considered as one) shows certain degree of micro-use-wear in the form of micro-notching along the edge (indicators of perpendicular pressure on the edge), as well as a larger notch at the centre of the edge. This could indicate a brief utilization (as a cutting tool?), which helped in shaping the outline of the piece as a point-like item. However, it remains doubtful whether the artifact was meant as a point or only ended up looking like one.

#1061. Item no. 2104-13596

Exc. nr.	Discovery date	Square-subsq.	Depth range Z(D)	Depth Z(datum)	UTM E (x)	UTM N (y)	Stratum	Stratig. comp. (SC)
X12	26/01/ 2017	N5-SW	-2.90/ -3.00	-2.98	283925.81	2724534.02	1218	C
Taxon code	Taxon definition	Length (mm)	Width (mm)	Thickness (mm)	Weight (g)	Raw material class		

Ht	Transversal point	35	19.8	7.9	5.39	V		
----	-------------------	----	------	-----	------	---	--	--



Characterization. This artefact — already famous internationally, thanks to its photograph distributed over and over again in the press, after the publication of the first *Nature* paper — is a transversal point made by the minimal modification of the edges of a secondary transversal flake to obtain a laterally symmetrical item, found in the gravelly layer 1218, immediately underneath the orange-colored, final-LGM stratigraphic marker 1212. The secondary transversal flake was extracted from a core of pale green limestone with an orange-brown cortex. The cortex is preserved on most of the distal half of the piece (left side of the point), combined with a thin yellowish patina that extends over the edge onto the ventral side. The platform, easily noticeable from both faces, is long and narrow, with a shallow ventral lip. It was extracted by a strong impact, probably with a soft hammer, but hard enough to produce a wide-amplitude impact ripple that manifests as a shallow wave-like protuberance that extends longitudinally along the ventral face. The distal edge of the blank was minimally retouched into its convex shape, forming the left edge of the point. The proximal half of the blank is

decorticated by two major flake scars, extracted from the parent core before the obtention of the blank, and originating in the same platform area. The proximal edge of the blank (right-distal edge of the point) is naturally square, and lacks post-extraction interventions. The piece displays a remarkable lateral symmetry.

#1062. Item no. 540-9996

Exc. nr.	Discovery date	Square-subsq.	Depth range Z(D)	Depth Z(datum)	UTM E (x)	UTM N (y)	Stratum	Stratig. comp. (SC)
X12	04/02/2016	K4	-2.73/-2.85	-2.78	283923.21	2724532.77	1219	C
Taxon code	Taxon definition	Length (mm)	Width (mm)	Thickness (mm)	Weight (g)	Raw material class		
Ht	Transversal point	37.6	21.7	6.6	6.14	V		



Characterization. This peculiar artefact is probably the advanced preform of a transversal point made on a primary (cortical) transversal flake obtained from a tabular core of dark-green limestone. The surface of the piece is eroded and smoothed, heavily patinated, and with cemented and polished depositions of fine-grained, orange-hued sediment. The flake was produced by hard impact, as indicated by the morphology of the ventral side. The platform is flat, wide,



non-prepared, located at the left end of the flat proximal edge. This edge represents the left edge of the point preform, as seen from the dorsal side. The distal edge of the transversal flake was modified by abrupt marginal retouch or trimming, forming a continuous convex edge that combines the basal and proximal-right edges of the preform. The distal-right edge of the preform still preserves the square cross-section, yet revealing one steep retouch removal. This suggests the thinning of this edge had been initiated, but abandoned. The intention was probably to create a transversal point with one square/one sharp edges converging at the tip.



#1063. Item no. 540-9998

Exc. nr.	Discovery date	Square-subsq.	Depth range Z(D)	Depth Z(datum)	UTM E (x)	UTM N (y)	Stratum	Stratig. comp. (SC)
X12	04/02/2016	K4	-2.73/-2.85	-2.80	283922.91	2724532.97	1219	C
Taxon code	Taxon definition	Length (mm)	Width (mm)	Thickness (mm)	Weight (g)	Raw material class		
Ht	Transversal point	33	22.2	7.6	4.42	V		



Characterization. This artefact is a probable transversal point, made on a secondary transversal flake of dark-green limestone. The flake has a very well-defined platform, strongly lipped and



abruptly leaning towards the ventral side. The same platform had received a previous impact, on its dorsal edge and before the extraction of the flake, which produced a transversal removal from the dorsal side, as part of the attempts to obtain the flake, and representing an indicator of human intentionality. The ventral side has a texturized micro-topography. The dorsal side presents a flat, natural, cortical section on its right side, which occupies most of the distal-left portion of the point. The distal edge of the blank (right margin of the point) was



shaped by abrupt flaking, which is more evident on the distal sector of the point. The surface features are eroded, obliterated, and coated by fine sediment depositions.

#1064. Item no. 525-9982

Exc. nr.	Discovery date	Square-subsq.	Depth range Z(D)	Depth Z(datum)	UTM E (x)	UTM N (y)	Stratum	Stratig. comp. (SC)
X12	04/02/2016	i6-SE	-	-2.16	283921.07	2724534.99	1220	C
Taxon code	Taxon definition	Length (mm)	Width (mm)	Thickness (mm)	Weight (g)	Raw material class		
Ht	Transversal point	72.8	34.3	11	26.38	V		

Characterization. This large item of green limestone, coated by thick depositions of reddish and brown cemented muddy sediment, is a potential transversal point or point preform, made by crude marginal modification on a heavy tertiary transversal flake. The blank has a large, heavy faceted platform, with an impact bulb on the ventral side. The platform and the bulb were later modified by blade-like flakes removed from the ventral side using the platform as origin. The



right end of the platform was used as a platform as well for the extraction of a large flake from the dorsal side of the blank, with the energy moving longitudinally along the axis of the piece and ending in a stepped termination. These post-extraction removals technically qualify as bifacial reduction. The distal edge of the flake was crudely shaped by retouch into a convex edge, mainly by percussion applied from the dorsal side. The wear visible along the other edge combine ancient and more recent micro-scars. The nature of this artefact is questionable, and its anthropic origin is not a definitive conclusion. Yet, it presents sufficient elements to consider it a crudely-made attempt of a transversal point.

#1065. Item no. 562-10015

Exc. nr.	Discovery date	Square-subsq.	Depth range Z(D)	Depth Z(datum)	UTM E (x)	UTM N (y)	Stratum	Stratig. comp. (SC)
X12	05/02/2016	i5	-2.40/ -2.60	-2.52	283921.06	2724534.27	1222	C
Taxon code	Taxon definition	Length (mm)	Width (mm)	Thickness (mm)	Weight (g)	Raw material class		
Ht	Transversal point	46.2	19	6.7	5.96	V		

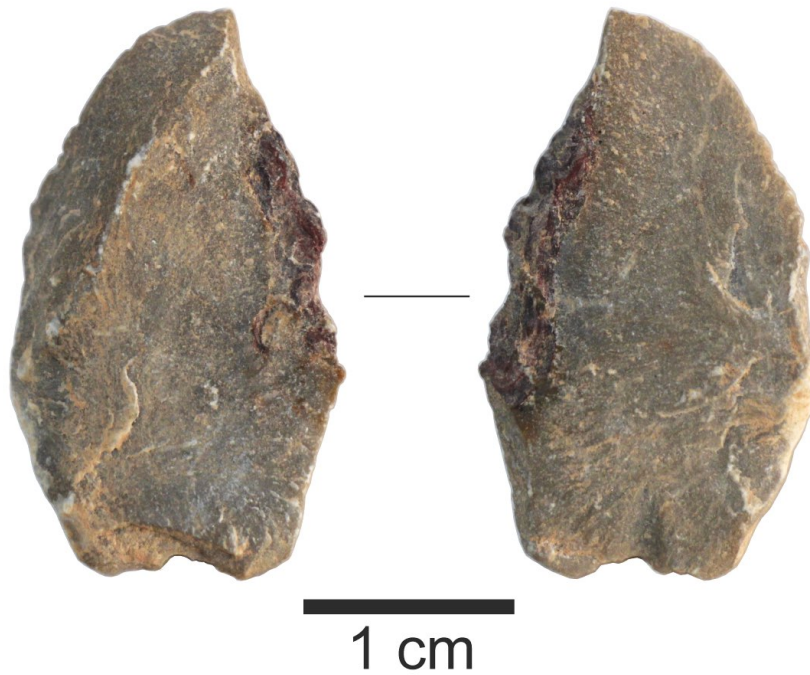


Characterization. This interesting artefact is a transversal point made on a transversal flake of green limestone with red banding. The surface is eroded, compromising the details of certain

morphological features. It is also covered by patina, by white carbonate depositions, and certain degree of polish. The thick end of the point represents the proximal section of the flake it was made on. The flatter surface is the dorsal side of the blank, while the ventral side shows evident marks of thinning, in the form of invasive flake scars. The right segment of the proximal edge of the blank was apparently used as a platform to shape the proximal part of the point, leaving behind short overlapped scars on the dorsal face, and achieving a convergent basal end. The distal edge of the blank was evidently shaped by systematic abrupt retouch, forming a straight edge and a pointy distal tip for the point. This point recovered from the deepest excavated layers at the cave has an interesting foliaceous shape and is ready to tip a shaft.

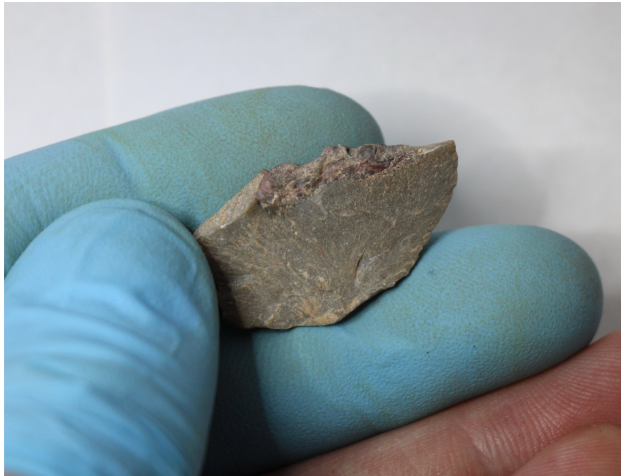


#1066. Item no. 562-10017



Exc. nr.	Discovery date	Square-subsq.	Depth range Z(D)	Depth Z(datum)	UTM E (x)	UTM N (y)	Stratum	Stratig. comp. (SC)
X12	05/02/2016	i5	-2.40/ -2.60	-2.54	283920.91	2724533.72	1223	C

Taxon code	Taxon definition	Length (mm)	Width (mm)	Thickness (mm)	Weight (g)	Raw material class		
Ht	Transversal point?	27.2	16.1	5	2.38	V		



Characterization. This small artefact is a possible transversal point preform, made on a slightly edge-modified tertiary transversal flake of fine-grained green limestone. The flake has a long platform, formed by a white-marked, ground, higher spot that defines the left end of a platform surface lipped on its ventral edge. This is associated with two *erailure* scars and an impact protuberance on the ventral side. The rest of the proximal edge consists of a flat surface leaning towards the dorsal face, forming the square edge of the typical square-edge/sharp-edge



pattern visible in most Chiquihuite items classified as “points”. The distal edge of the blank was modified by controlled fracture, forming the laterally symmetrical ogival shape. This edge of the point is dominated by a natural imperfection: a cortical, purple-colored mineral intrusion.

#1067. Item no. 648-12273

Exc. nr.	Discovery date	Square-subsq.	Depth range Z(D)	Depth Z(datum)	UTM E (x)	UTM N (y)	Stratum	Stratig. comp. (SC)
X12	08/02/2016	K7	-	-3.50	283922.86	2724535.92	1223	C
Taxon code	Taxon definition	Length (mm)	Width (mm)	Thickness (mm)	Weight (g)	Raw material class		

Ht	Transversal point	39.1	20.1	7.5	5.58	V		
----	-------------------	------	------	-----	------	---	--	--



Characterization. This laurel leaf-shaped artefact is a possible transversal point or point preform, made by edge modification on a green limestone transversal flake, and found in the deepest excavated strata at the site. The dorsal side is partially coated by cemented fine-grained sediment. The platform is no longer visible, but its location is suggested by the topography of the ventral side. The flake has a confusing morphology, as it is possible to also consider it as a blade-like flake with the



platform located at the distal tip of the point. The right edge of the point is the proximal edge of the blank, still sharp, and without modifications. The distal edge bears evidence of trimming and retouch, which resulted in the laterally symmetrical shape of the point.

#1068. Item no. 571-10058

Exc. nr.	Discovery date	Square-subsq.	Depth range Z(D)	Depth Z(datum)	UTM E (x)	UTM N (y)	Stratum	Stratig. comp. (SC)
X12	06/02/2016	L6	-	-3.30	283923.67	2724534.78	1223	C
Taxon code	Taxon definition	Length (mm)	Width (mm)	Thickness (mm)	Weight (g)	Raw material class		
Ht	Transversal point	37.7	22.7	6.2	5.58	V		



Characterization. This artefact, found in the oldest excavated layer, is a transversal point made by edge-trimming on a primary or secondary transversal flake of green limestone. The thick orange-brown coating on the dorsal side is not all cortex, but a combination of lighter-hued, worn-out cortex, with a darker, more reddish patina formed after the deposition, as shown by it invading the edges and fracture planes. Whiter carbonate concretions are visible on the platform area of the ventral side. The platform is thick and mostly missing, apparently removed as part of the marginal modifications on the blank. The corresponding area of the ventral side is thicker and slightly convex, probably a form of impact bulb. Several relatively large *erraillure* scars overlap in the proximal area of the ventral face. The distal edge was modified by abrupt flaking or trimming originating from the dorsal side. The pointy distal tip of the point was shaped by two adjacent percussion micro-scars flaked from the direction of the ventral side. Uneven retouch, originating from the ventral side, appears also on the other edge. The base received incipient thinning attempts, as indicated by abrupt scars on the dorsal side and thinner, more invasive, scars in the platform area on the ventral side. This artefact is one of the oldest at Chiquihuite Cave.

