

# I. Excavation X-12, stratigraphic component B (SC-B; 628 artefacts, numbers 1–628)

## I.1. Taxon B: Cores (9 items; #1–9)

### #1. Item no. 905-13626

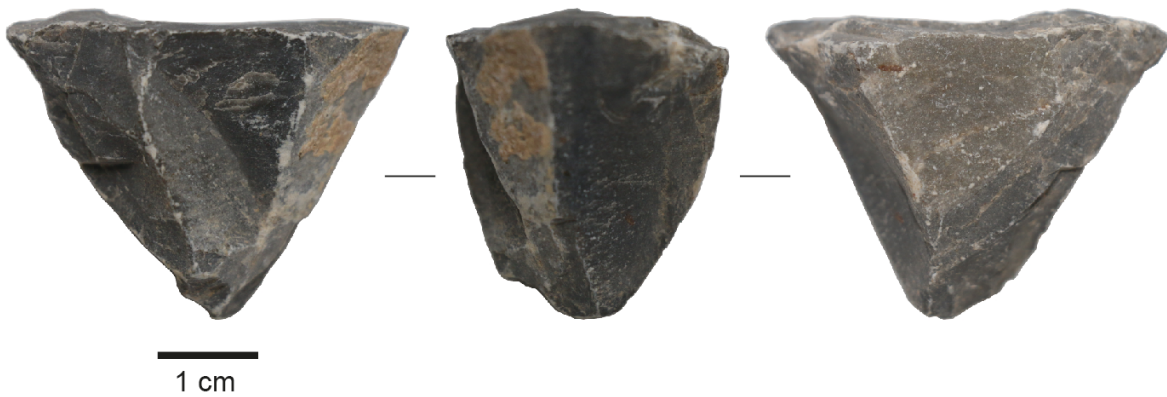
Exc. nr.	Discovery date	Square-subsq.	Depth range Z(D)	Depth Z(datum)	UTM E (x)	UTM N (y)	Stratum	Stratig. comp. (SC)
X12	08/01/2017	N5-SE	-1.50/ -1.60	-1.52	283926.11	2724533.72	1203 B	B
Taxon code	Taxon definition	Length (mm)	Width (mm)	Thickness (mm)	Weight (g)	Raw material class		
B	Blade core?	34.7	19	13.3	11.39	V		



**Characterization.** This item has the attributes of a blade core, presenting at least three blade scars in a spiral disposition around the longitudinal axis of the piece. The raw material is pale-green limestone, but the surface is strongly affected by thermal or chemical damage. Most likely, the piece has been burned, a trait shared by many other items from stratum 1203 B.

**#2. Item no. 1288-12304**

Exc. nr.	Discovery date	Square-subsq.	Depth range Z(D)	Depth Z(datum)	UTM E (x)	UTM N (y)	Stratum	Stratig. comp. (SC)
X12	14/01/2017	N3-SE	-1.70/ -1.80	-1.75	283926.26	2724531.77	1204	B
Taxon code	Taxon definition	Length (mm)	Width (mm)	Thickness (mm)	Weight (g)	Raw material class		
B	Core?	31	42	28.3	31.4	V(b)		



Characterization. This item is a probable pyramidal core of black limestone, with blade-like extractions around the central axis and the proximal area, with the previous platform removed at a final stage, probably in the form of a core tablet.

**#3. Item no. 898-12286**

Exc. nr.	Discovery date	Square-subsq.	Depth range Z(D)	Depth Z(datum)	UTM E (x)	UTM N (y)	Stratum	Stratig. comp. (SC)
X12	08/01/2017	N4-NE	-1.50/ -1.60	-1.55	283926.26	2724533.37	1204	B
Taxon code	Taxon definition	Length (mm)	Width (mm)	Thickness (mm)	Weight (g)	Raw material class		
B?	Core?	15.2	27.8	18.7	13.19	V		

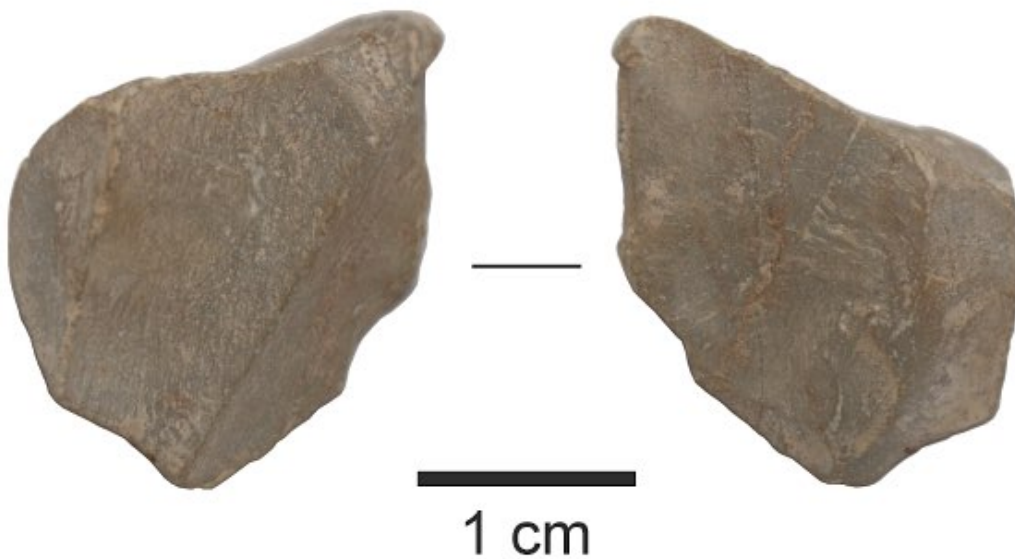
Characterization. This item of hexagonal prismatic shape has a questionable origin, and it can be hypothetically interpreted as a prismatic micro-blade core, with micro-blades extracted around the perimeter of the core, and with further extractions from one of the flat surfaces. The artefact can also be interpreted as a thick blade-core tablet. The surfaces are eroded and



coated by patina, a different one from the flat surface with flake extractions. A third possibility is that the prismatic shape is entirely of natural origin, a prismatic stone nodule used for the extraction of small flakes from one face.

**#4. Item no. 1272-12303**

Exc. nr.	Discovery date	Square-subsq.	Depth range Z(D)	Depth Z(datum)	UTM E (x)	UTM N (y)	Stratum	Stratig. comp. (SC)
X12	14/01/2017	O6-NW	-1.70/ -1.80	-1.75	283926.71	2724535.40	1204	B
Taxon code	Taxon definition	Length (mm)	Width (mm)	Thickness (mm)	Weight (g)	Raw material class		
B?	Blade core?	22	26	14.2	8.29	V		



**Characterization.** This small artefact, made of a nodule of fine-grained pale-green limestone, is probably a multi-directional microblade core. It could also be a bifacially reduced preform of some tool; yet, the morphology rather stands for the intention to obtain small blade-like flakes and microblades, possibly meant for microlithic composite tools or for immediate use as cutting tools-on-flake, for example. The removal imprints show longitudinal extractions, not transversal, probably with one exception. The extractions originate from at least two directions. One of the wide faces of the blank, previously employed as platform for the extraction of a few small flakes, was later removed by the extraction of a final bladelet.

### **#5. Item no. 1077-12490**

Exc. nr.	Discovery date	Square-subsq.	Depth range Z(D)	Depth Z(datum)	UTM E (x)	UTM N (y)	Stratum	Stratig. comp. (SC)
X12	11/01/2017	N6-SW	-1.60/ -1,70	-1.65	283925.76	2724534.67	1204 ABC	B
Taxon code	Taxon definition	Length (mm)	Width (mm)	Thickness (mm)	Weight (g)	Raw material class		
B	Core tablet	27.5	20	8.7	5.22	V(b)		



**Characterization.** This artefact is a core tablet, a transversal extraction removed from the proximal end of a micro-blade core, presumably with the purpose to refresh the platform area. Three contiguous micro-blade scars are visible on a side of the core tablet. The opposite side is thin. The white-dotted impact point and associated impact bulb derived from the extraction of the core tablet are visible on its ventral side.

### **#6. Item no. 357-10671**

Exc. nr.	Discovery date	Square-subsq.	Depth range Z(D)	Depth Z(datum)	UTM E (x)	UTM N (y)	Stratum	Stratig. comp. (SC)
X12	29/01/2016	M6	-2.20/ -2.40	-2.25	283926.06	2724535.27	1206	B
Taxon code	Taxon definition	Length (mm)	Width (mm)	Thickness (mm)	Weight (g)	Raw material class		

B	Core	42.4	30.6	16.3	25.16	V		
---	------	------	------	------	-------	---	--	--



**Characterization.** This item is probably a blade core of prismatic shape. Only one blade extraction is evident. The other facets are rather natural. The piece is coated by fine sediment depositions, consistent with the muddy texture of its stratigraphic context.

#### **#7. Item no. 1609-12314**

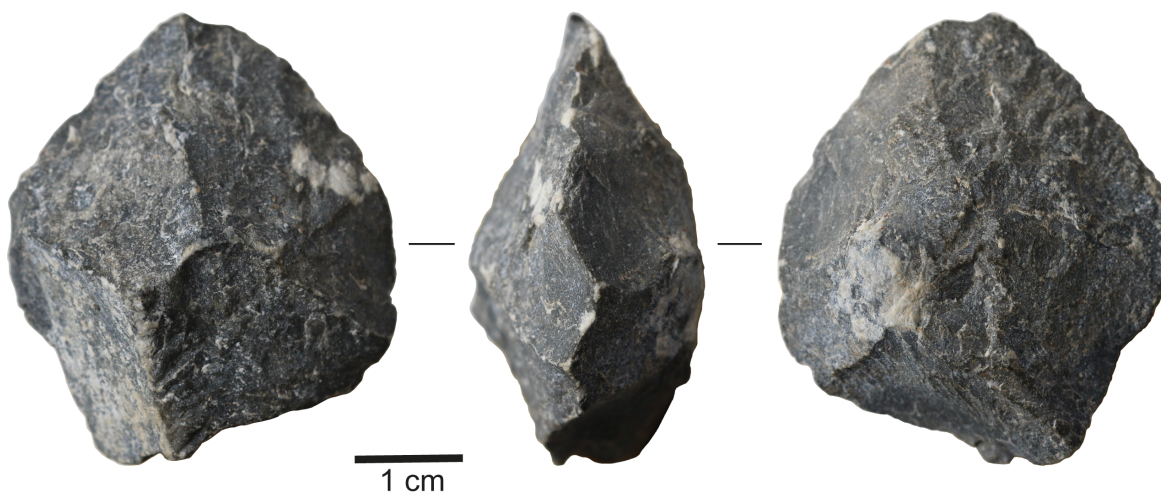
Exc. nr.	Discovery date	Square-subsq.	Depth range Z(D)	Depth Z(datum)	UTM E (x)	UTM N (y)	Stratum	Stratig. comp. (SC)
X12	18/01/2017	M4-NE	-2.00/-2.10	-2.05	283925.14	2724533.33	1206	B
Taxon code	Taxon definition	Length (mm)	Width (mm)	Thickness (mm)	Weight (g)	Raw material class		
B?	Core type "b"?	28.4	26.8	13.5	10.44	V(b)		

**Characterization.** This artefact made of a black sub-variety of flakable Chiquihuite limestone seems to be a small "Mousterian"-type core (our previously named "type b", in Ardelean et al. 2020). It has a biconvex, lenticular cross-section with concentric flaking on the faces. A large flake removal occupies most of one of the faces, as it would normally occur on an exhausted Levallois-type core. This item was discovered in close proximity to the one described next (#8).



**#8. Item no. 1541-12309**

Exc. nr.	Discovery date	Square-subsq.	Depth range Z(D)	Depth Z(datum)	UTM E (x)	UTM N (y)	Stratum	Stratig. comp. (SC)
X12	18/01/2017	N6-NE	-1.90/ -2.00	-1.95	283925.66	2724535.17	1206	B
Taxon code	Taxon definition	Length (mm)	Width (mm)	Thickness (mm)	Weight (g)	Raw material class		
B	Core type "b"	42	37	21.4	27.98	V(b)		



**Characterization.** This artefact is similar to the one described above, belonging to the same typological and technological category: a “Levallois-like” core elaborated on a tabular nodule

of black limestone variety. This biconvex cross-section artefact lacks the final “*Levallois*-type” flake removal visible on the similar tool found close to this one (see above, #7). Yet, the human-made controlled concentric flaking is self-evident on both faces. The circular edge of the artefact shows a characteristic “zig-zag” trajectory usually associated with the bifacial alternating flaking patterns. There is a small section of the artefact that preserves the natural flat edge of the original nodule. The final “*levallois*” flake was not extracted, but the attempt could have been made, as suggested by an evident white-dotted impact area visible near the highest point on one of the faces, perhaps caused by a failed extraction attempt. The impact is situated in the precise location expected to be selected for the removal of a *Levallois*-like flake from a Mousterian-like core.

**#9. Item no. 1896-12318**

Exc. nr.	Discovery date	Square-subsq.	Depth range Z(D)	Depth Z(datum)	UTM E (x)	UTM N (y)	Stratum	Stratig. comp. (SC)
X12	23/01/2017	M4-NW	-2.40/-2.50	-2.50	283924.74	2724533.33	1208	B
Taxon code	Taxon definition	Length (mm)	Width (mm)	Thickness (mm)	Weight (g)	Raw material class		
B	Core tablet?	27.4	27.4	8.6	9.6	V		



Characterization. This is an interesting artefact, which most likely is a core tablet: a thick transversal segment removed by a single lateral blow from the upper (proximal) section of a core. The artefact has a round contour, whereas a heavily impacted white-dotted platform is set on a side. This is the platform that served to remove the tablet from the original core. The ventral side of the core tablet shows pronounced impact striations, consistent with the heavy blow on the platform, necessary to achieve the removal of a segment of such a thickness. Small secondary impact imprints radiate from the same platform on the ventral side. Another

white-spotted platform is visible on another location on the contour of the artefact, but it seems it was related with a previous failed and abandoned removal attempt. On the other hand, this could be the original of a thin *outrépassé* thinning flake that occupies most of the dorsal side of the piece. At least one rounded removal scar on the edge of the object was probably part of a blade extraction from the original core that the tablet comes from.

