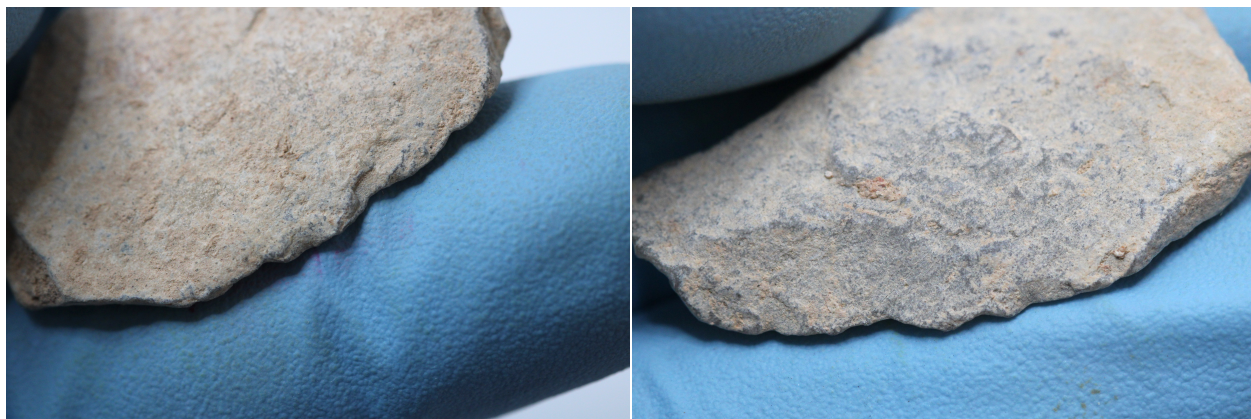


V.6. Taxon F – D, Dx, Dt: Tools on flake, modified/used flakes
(10 items; #1119–1128)

#1119. Item no. 3083-17171

Exc. nr.	Discovery date	Square-subsq.	Depth range Z(D)	Depth Z(datum)	UTM E (x)	UTM N (y)	Stratum	Stratig. comp. (SC)
X16	20/01/2019	A3-SW	6.50/ 6.45	6.47	283904.97	2724524.64	1606	C
Taxon code	Taxon definition	Length (mm)	Width (mm)	Thickness (mm)	Weight (g)	Raw material class		
E, F	Flake, used	30	18.6	4.3	2.87	V		





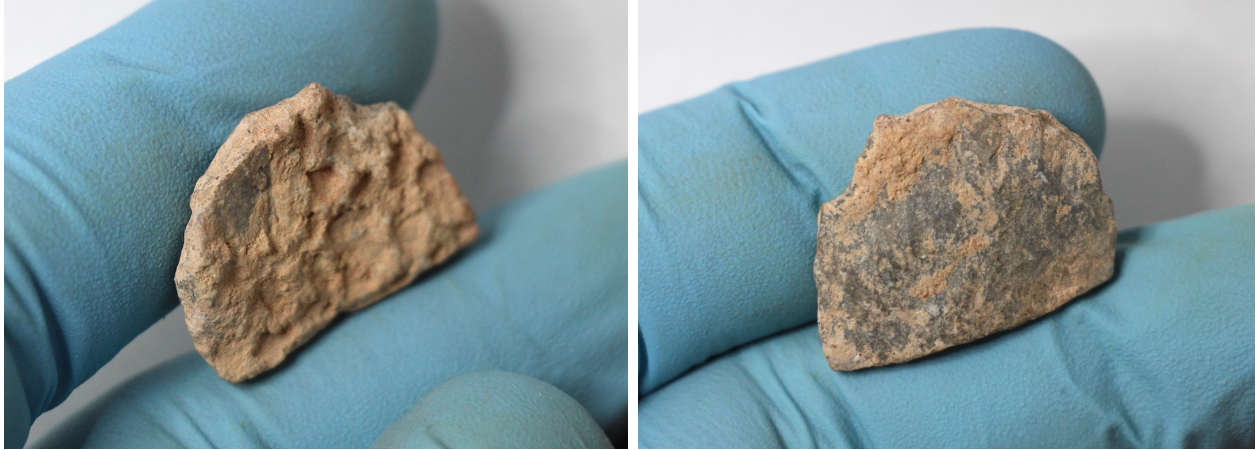
Characterization. This artefact with eroded surfaces is a cutting tool on flake, made by edge modification on a tertiary flake of green limestone. The morphology of the blank is difficult to assess. It also seems to be a primary flake, with one face cortical. One side is modified by fracture, forming a blunt squarish edge, suitable as finger-resting margin, if the tool is utilized in the modality of a backed knife. The opposite edge is a sharpened convex edge, presumably the working edge of the cutting tool, revealing certain evidence of use-wear, partly obstructed by coating and post-depositional damage.

#1120. Item no. 3899-17191

Exc. nr.	Discovery date	Square-subsq.	Depth range Z(D)	Depth Z(datum)	UTM E (x)	UTM N (y)	Stratum	Stratig. comp. (SC)
X16	03/02/2019	A7-SE	-	5.47	283905.47	2724528.65	1606	C
Taxon code	Taxon definition	Length (mm)	Width (mm)	Thickness (mm)	Weight (g)	Raw material class		
D, F	Flake, modified	18	22.7	5.2	2.63	V		



Characterization. This semicircular item is a possible tool-on-flake, made on a modified green limestone flake, and with the dorsal side completely covered by cemented carbonate sediment concretions. The dorsal side is slightly concave, and the ventral side is slightly convex. The proximal margin is straight, probably produced by fracturing the blank. The remaining contour



is a convex edge made by retouch, with the retouch scars visible despite the thick coating. However, the sediment depositions obstruct the proper understanding of the use-wear and functionality.

#1121. Item no. 3973-16562

Exc. nr.	Discovery date	Square-subsq.	Depth range Z(D)	Depth Z(datum)	UTM E (x)	UTM N (y)	Stratum	Stratig. comp. (SC)
X16	05/02/2019	A7-SE	-	5.51	283905.31	2724528.52	1606	C
Taxon code	Taxon definition	Length (mm)	Width (mm)	Thickness (mm)	Weight (g)	Raw material class		
Dx, F	Flake, modified	18.3	18.3	3.4	1.36	V		



Characterization. This interesting small artefact is a modified tertiary flake of green limestone, transformed by edge modification into a triangular, composed shape, object. The shape, though, may also be a simple coincidence derived from specific actions related to the use of the item. The proximal edge is irregular and rugged, cortical. The platform is located at the

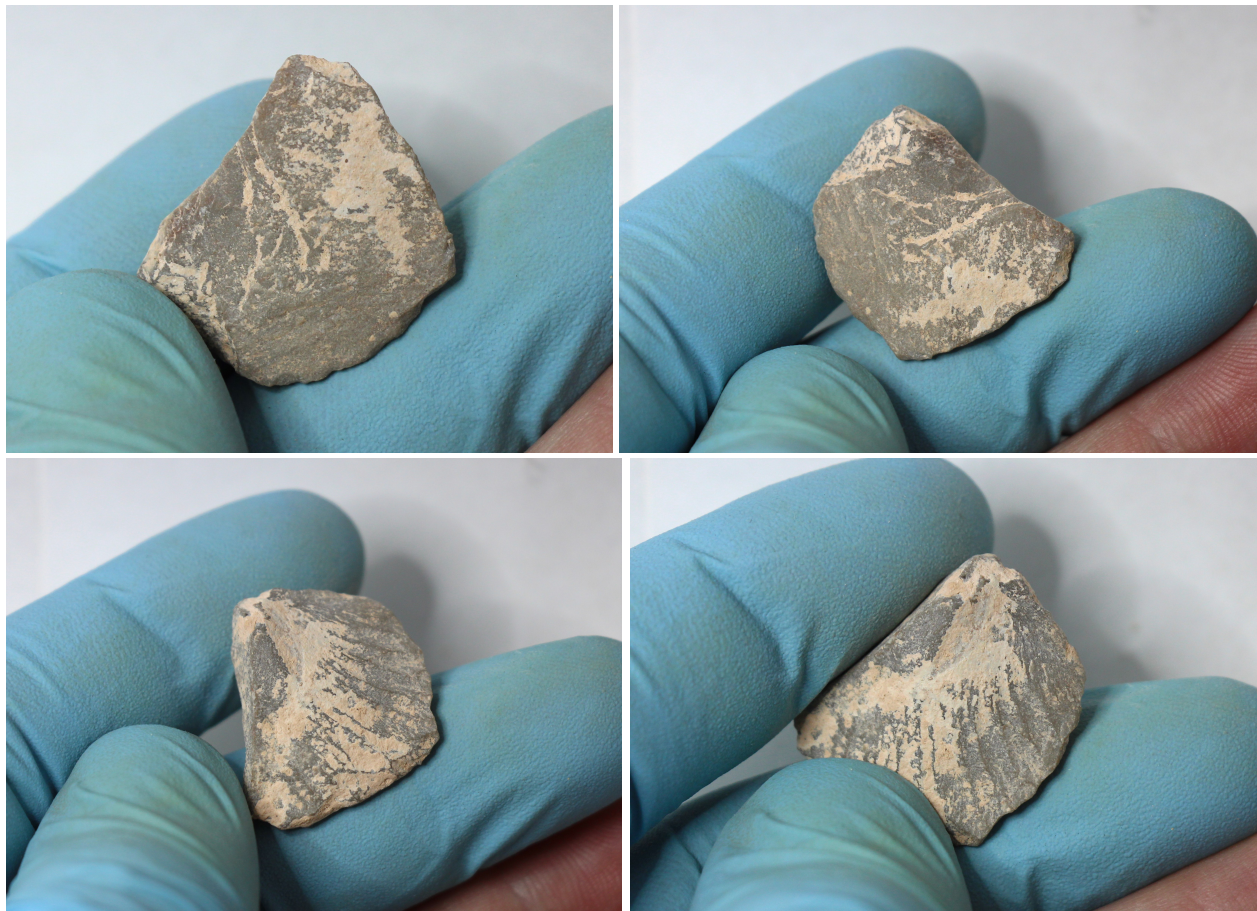


centre-left of the edge, without particular preparation to be noted. On its ventral side, an *erailure* scar is visible at the centre, below the proximal edge, and a shallow edge lip at the right end. The centre of the ventral side is slightly convex, as a particular manifestation of the impact bulb. The right edge is broken straight, forming an angle with the right end of the proximal edge, which resembles a point. The right and distal edges may have been used, as they present certain degree of damage that looks like possible use-wear, but the actual nature of the modification is difficult to determine.

#1122. Item no. 3988-17192

Exc. nr.	Discovery date	Square-subsq.	Depth range Z(D)	Depth Z(datum)	UTM E (x)	UTM N (y)	Stratum	Stratig. comp. (SC)
X16	05/02/2019	A7-NE	-	5.37	283905.50	2724529.14	s/1606	C

Taxon code	Taxon definition	Length (mm)	Width (mm)	Thickness (mm)	Weight (g)	Raw material class		
Dt, F	Transversal flake, used	18.1	23	7.2	3.06	V		



Characterization. This artefact is a tool-on-flake, made on a transversal flake extracted from a tabular core of pale-green limestone. The proximal edge is flat, wide, natural, part of the cortical surface of the parent core. The platform is located at its left end, without visible preparations, associated with a large impact bulb fused to its ventral edge. The dorsal margin of the proximal edge bears the indicators of previous failed extraction attempts, in the form of a



concavity on the trajectory of the edge, and overlapped thin scars on the flat dorsal side. The ventral side is convex, with marked impact striations radiating away from the platform area. Both surfaces present whitish carbonate stains. The right and distal edges show modifications in the form of marginal retouch and trimming, as well as localized use-wear, probably derived from the use of the item as a cutting tool in the modality of backed knife. The use-wear indicates mostly perpendicular pressure applied directly against the edges, as well as angular pressure coming from the direction of the ventral side.

#1123. Item no. 4260-16681

Exc. nr.	Discovery date	Square-subsq.	Depth range Z(D)	Depth Z(datum)	UTM E (x)	UTM N (y)	Stratum	Stratig. comp. (SC)
X16	16/02/2019	A7-SW	5.40/ 5.35	5.38	283904.87	2724528.94	1606	C

Taxon code	Taxon definition	Length (mm)	Width (mm)	Thickness (mm)	Weight (g)	Raw material class		
Dt, F	Transversal flake, used?	12.5	20.3	4.3	1.16	V		



Characterization. This artefact is a tertiary transversal flake of dark-green limestone, with scarce carbonate depositions on the dorsal side, which was also utilized as a tool-on-flake, probably a cutting tool. The punctiform platform is located on the angular spot of the proximal edge, where two squarish edge segments meet. Failed attempts of extraction produced a smaller transversal flake scar on the proximal-dorsal section. On the ventral side, the impact

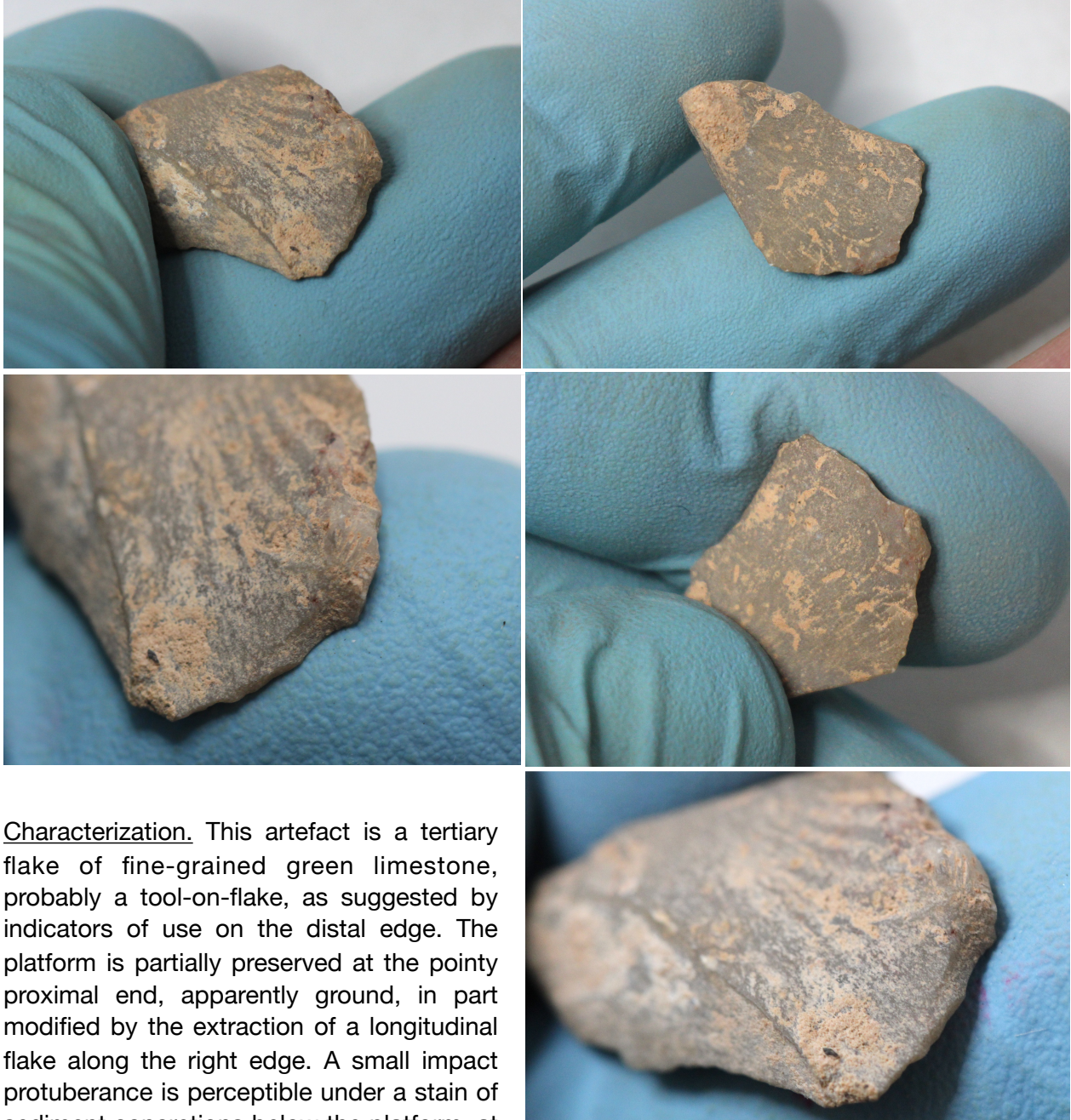


spot is associated with a small *erailure* scar and a large, defined impact bulb visible on the right side of the face. The right segment of the distal edge reveals evidence of use-wear, in the form of micro-retouch and polish formed on the ventral side of the edge, consistent with the product of cutting tool functionality.

#1124. Item no. 2198-16362

Exc. nr.	Discovery date	Square-subsq.	Depth range Z(D)	Depth Z(datum)	UTM E (x)	UTM N (y)	Stratum	Stratig. comp. (SC)
X16	08/01/2019	B1-SE	6.49/6.43	6.45	283906.27	2724522.74	1606	C
Taxon code	Taxon definition	Length (mm)	Width (mm)	Thickness (mm)	Weight (g)	Raw material class		
Dx, F	Flake, used	20.9	14.2	4.8	1.10	V		





Characterization. This artefact is a tertiary flake of fine-grained green limestone, probably a tool-on-flake, as suggested by indicators of use on the distal edge. The platform is partially preserved at the pointy proximal end, apparently ground, in part modified by the extraction of a longitudinal flake along the right edge. A small impact protuberance is perceptible under a stain of sediment concretions below the platform, at the proximal end of the curved ventral side.

The dorsal side is conformed by two previous extraction scars. The narrow distal edge presents a very fine retouch, visible from the dorsal side, formed as use-wear by utilizing the flake, probably as a cutting tool.

#1125. Item no. 2242-16369

Exc. nr.	Discovery date	Square-subsq.	Depth range Z(D)	Depth Z(datum)	UTM E (x)	UTM N (y)	Stratum	Stratig. comp. (SC)
X16	10/01/2019	B1-NE	6.45/ 6.40	6.43	283906.32	2724523.24	1606	C
Taxon code	Taxon definition	Length (mm)	Width (mm)	Thickness (mm)	Weight (g)	Raw material class		
D, F	Flake, used	13.6	14.8	2.9	0.68	V		



Characterization. This small artefact is a possible microlith implement, a fragment of a secondary flake or blade, with one apparently used edge. The dorsal side is partly cortical, on its right half. The ventral side reveals a deep, angular extraction on its possible proximal end, perhaps the equivalent of an *erailure* scar. The artefact is a medial fragment, with the proximal section removed by fracture, and the distal end also missing.





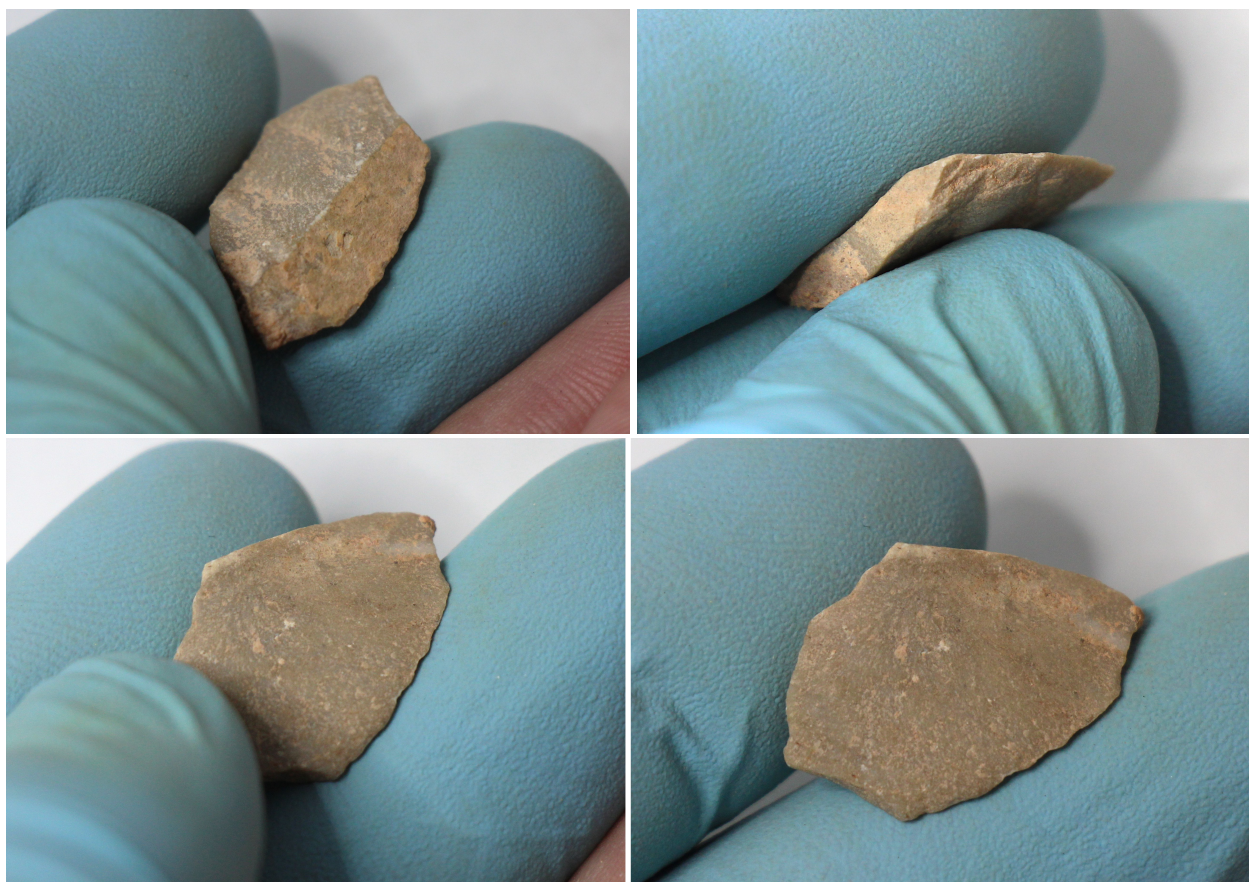
The right edge is broken in an angular form. The convex left edge presents a beveled, micro-retouched margin, probably use-wear resulted from cutting activity.

#1126. Item no. 3095-16489

Exc. nr.	Discovery date	Square-subsq.	Depth range Z(D)	Depth Z(datum)	UTM E (x)	UTM N (y)	Stratum	Stratig. comp. (SC)
X16	20/01/2019	B1-NW	6.45/ 6.40	6.42	283905.97	2724523.24	1606	C
Taxon code	Taxon definition	Length (mm)	Width (mm)	Thickness (mm)	Weight (g)	Raw material class		
Dt, F	Transversal flake, used?	13.6	18.8	3.7	1.07	V		



Characterization. This artefact is a secondary transversal flake of green limestone, a possible tool-on-flake. The platform is punctiform, collapsed under impact, located at the inflection point formed by a flat cortical and a thin sharp edges. The percussion impact on the platform produced collateral micro-scars on the corresponding part of the dorsal side. Fine striations on the ventral face confirm the location of the impact spot. The dorsal side presents a transversal ridge that defined a cortical surface on the distal half of the item. The distal edge was the

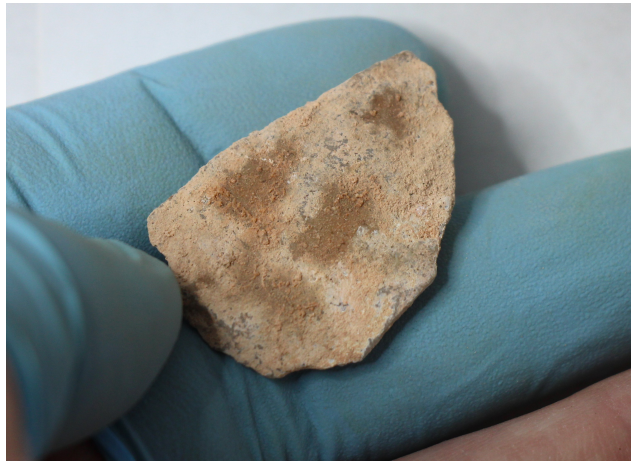


working edge of a possible cutting tool. The use-wear on the edge, in the form of a wavy, serrated profile, is consistent with the expected indicators of this type of functionality.

#1127. Item no. 4120-17428

Exc. nr.	Discovery date	Square-subsq.	Depth range Z(D)	Depth Z(datum)	UTM E (x)	UTM N (y)	Stratum	Stratig. comp. (SC)
X16	09/02/2019	B5-NE	-	5.54	283906.41	2724527.26	1606	C
Taxon code	Taxon definition	Length (mm)	Width (mm)	Thickness (mm)	Weight (g)	Raw material class		
Dx, F	Flake, modified	29.6	22.5	4.8	3.29	V		

Characterization. This artefact is a possible tool-on-flake, a thin, modified, tertiary flake of green limestone, completely covered by thick cemented muddy sediment depositions, on both faces. Darker brown stains on the dorsal side indicate the flake had remained exposed on the surface, in the proximity of a dripping spot from the ceiling. The accumulations of sediment on the ventral side suggest a permanence in contact with a once humid, muddy surface. The straight edge is the proximal edge, a naturally flat surface removed as such from the parent



core. The location of the impact cannot be determined. The ventral edge of the proximal end shows a slight curvature and an overhang over the ventral side. All the remaining contour of the flake was modified by percussion retouch into a widely serrated convex edge, presumably the working edge of a tool.



#1128. Item no. 4139-17196

Exc. nr.	Discovery date	Square-subsq.	Depth range Z(D)	Depth Z(datum)	UTM E (x)	UTM N (y)	Stratum	Stratig. comp. (SC)
X16	11/02/2019	C5-SW	-	5.65	283906.59	2724526.52	1606	C
Taxon code	Taxon definition	Length (mm)	Width (mm)	Thickness (mm)	Weight (g)	Raw material class		
Dx, F?	Flake, used?	15.8	20.6	3	1.52	V		



Characterization. This artefact is a thin, tertiary flake of green limestone, possibly used as a tool, with thick cemented concretions on the dorsal-right side. The platform is at the centre of a thin edge, curved towards the ventral side, associated with an *erailure* scar and a shallow impact convexity. The dorsal side cannot be analyzed, because of the coating. The edges are visibly modified, trimmed, and probably used, although specific use-wear is difficult to detect.

